

<b>2008 TAURUS X LIMITED AWD</b>  <b>\$10,995</b>	<b>2010 SUBARU IMPREZA HATCH AWD</b>  <b>\$11,995</b>	<b>2010 INFINITI G37</b>  <b>\$15,995</b>	 <b>16-7TH AVENUE, GIMLI, MB</b> <b>SALES - 855-963-1818</b> <small>All price are plus taxes. See dealer for details.</small> <small>Dealer #5358</small>
--	--	---	--

Merry  
Christmas

THE EXPRESS  
WEEKLY NEWS  
VOLUME 5 EDITION 51    THURSDAY, DECEMBER 20, 2018

SERVING LUNDAR, ASHERN, ERIKSDALE, MOOSEHORN, FISHER BRANCH, RIVERTON, ARBORG, GIMLI, WINNIPEG BEACH, ARNES, MELEB, FRASERWOOD

CHRISTMAS  
GIFT Ideas

STIHL MSA120  
C-BQ Chainsaw  
  
**\$399<sup>00</sup>**

BG50 Gas  
Blower  
  
**\$189<sup>95</sup>**

STIHL MS170  
Chainsaw  
• 30 c.c. • 16" bar • 1 year warranty  
  
**\$199<sup>00</sup>**

STIHL MS291  
Chainsaw  
  
**\$499<sup>00</sup>**

SHACHTAY  
SALES & SERVICE  
Arborg, MB  
204-376-5233



**Breakfast with Santa**

EXPRESS PHOTO BY PATRICIA BARRETT

Ella got decked out in a jolly elf outfit and had a very nice visit with Santa at the Interlake Relay for Life 2nd Annual fundraising breakfast on Dec. 8 in Winnipeg Beach.

news > sports > opinion > community > people > entertainment > events > classifieds > careers > everything you need to know

FISHER POWERSPORTS  
63 Main St. Fisher Branch MB    1-204-372-6648  
Kawasaki

Merry Christmas  
AND HAPPY NEW YEAR  
from everyone at FISHER POWERSPORTS



# Gimli High students receive music to their ears

By Roger Newman

Gimli High School (GHS) students have won the battle of the band room.

Evergreen School Division Superintendent Roza Gray announced last Wednesday that the Manitoba Government has given permission for the division to proceed with construction of a long awaited band room.

Gray said the new \$1.2 million band room will be self-funded by the division with already available funds and borrowing through a debenture. She also said construction will start in 2019 on a band room project finally approved after Gimli High students protested delays - first to Gimli MLA and cabinet minister Jeff Wharton and then to Premier Brian Pallister at the Manitoba Legislature.

The superintendent made her announcement at the GHS winter concert which showcased the talents of 100-plus students enrolled in the school's band program. "I've never been more proud of our students as they fought for the band room," Gray told the always packed gymnasium at the winter concert.

Continued on page 3



EXPRESS PHOTOS BY ROGER NEWMAN

A loud ovation from the audience greeted the news that the band room is going to proceed.

Wishing everyone a happy  
*holiday season.*



 **Noventis**  
CREDIT UNION

[noventis.ca](http://noventis.ca)



## Baker Law

### CORPORATION

Do you have a current will?

Protect your family by having a current will, power of attorney and health care directive. Call us or stop in for more information and find out how we can help you.

**Grant D. Baker**  
Barrister, Solicitor and Notary

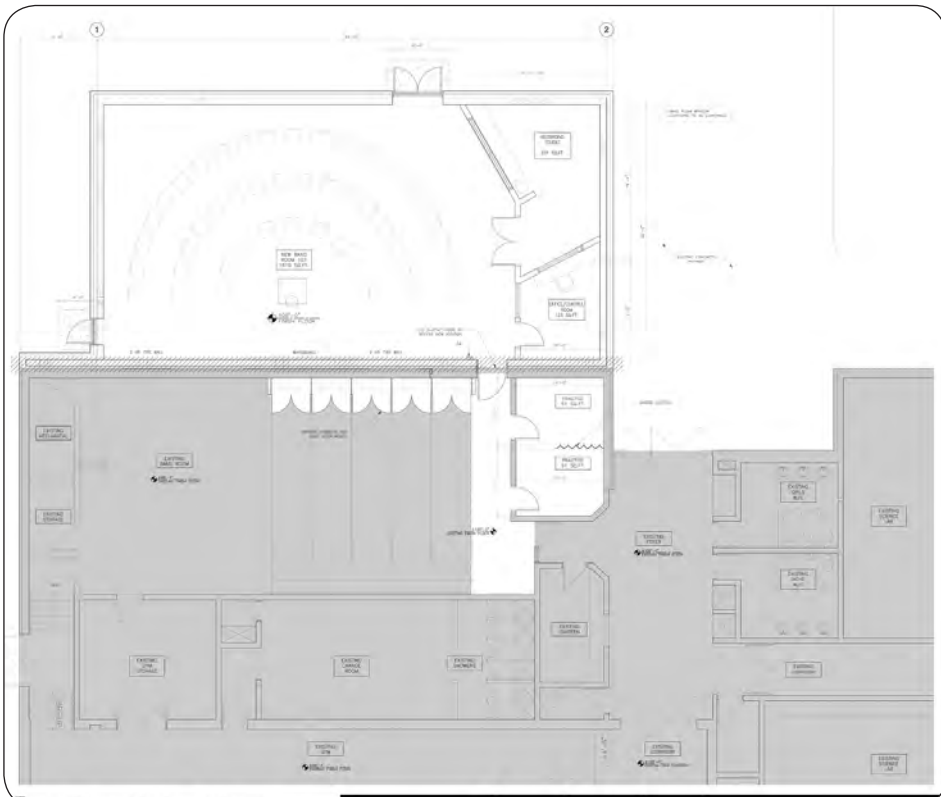
Providing full time legal service to families and small businesses in Gimli and the Interlake.

<b>GIMLI LOCATION</b> 72 Centre Street, Gimli, MB Our office is open 9-5 Mon to Fri 204-642-8681 or 1-866-487-5688	<b>RIVERTON LOCATION</b> 33 Main St. Riverton MB Open Mon & Wed 9:30-4:30 204-378-5427
---	---





GHS band teacher Rob Chrol, Evergreen Superintendent Roza Gray and music student Lee LaPierre were all overjoyed that the new band room will be built.



An artist's conception of the new Gimli High band room to be built on the north side of the school.

## > MUSIC, FROM PG. 2

Manitoba Municipal Affairs Minister Wharton was present at the concert and said the division got what it asked for in regards to the band room. But that was just partly correct because the division only turned to self funding the project after being refused direct financial aid from the Manitoba Government. Evergreen would have like some direct provincial money, but was turned down three times in recent years, once by the former NDP Govern-

ment and twice by the present Conservative administration.

Gray's "fantastic news" about the band room approval drew a loud ovation from the audience. Probably the happiest person in the gym was GHS band teacher Rob Chrol who said the better band room will upgrade the musical educations of GHS music students and improve their opportunities in areas like recording.

LAST-MINUTE  
CHRISTMAS SHOPPING  
GOT YOU

# FRAZZLED?

## LET US HELP

We have:

- STOCKING STUFFERS
- JETS MERCHANDISE
- TOYS + GAMES
- GIFTS FOR HIM + HER
- WRAPPING PAPER
- DECORATIONS
- LIGHTS

Gift  
Cards

**Arborg Home**  
hardware  
building centre

**Here's How.**  
451 Main Street, Arborg  
204-376-3090



**DOWNLOAD THE CO-OP CRS MOBILE APP, available for Apple, Android, Windows & Blackberry**

Red or Green  
**Seedless  
Grapes**  
SALE **2.49**  
lb  
5.49/kg

Cracker Barrel  
**Cheese**  
SALE **9.99**  
ea  
907g,  
FIRST 2

Co-op A Gold  
**Turkeys**  
SALE **99¢**  
lb  
2.18/kg,  
FIRST 1

Co-op Gold  
**Ice Cream or  
Frozen Yogurt**  
SALE **3.99**  
ea  
1.5L

Coke or Pepsi  
**Products**  
SALE **3 FOR  
11.97**  
12 x355ml  
FIRST 3



**ARBORG FOOD STORE**  
204-376-5271

**Interlake**  
Sale Dates December 20-26, 2018



**ERIKSDALE FOOD STORE**  
204-739-2116

Old Dutch or Ridges  
**Potato  
Chips**  
SALE **4 FOR  
10**  
220 - 255g



# Former Gimli mayor gets a little brassy

By Patricia Barrett

Who knew one of Gimli's former mayors is a master at blowing his own horn. Bill Barlow, who served as Town of Gimli mayor from 1989 to 2002, was guest performer at the Westshore Singers' Here We Come a Carolling concert on Dec. 11, the choir's final performance of the year.

"It was such a great performance and Bill Barlow's guest appearance playing the E flat alto horn was pretty amazing," said documentary filmmaker Andy Blicq, who attended the two-hour performance at the Gimli Lutheran Church.

The singers, under the baton of Karen Lamb, performed a selection of festive Christmas songs. Stay tuned for information about next year's series of concerts.



The Westshore Singers performed popular Christmas songs during their concert last week.



EXPRESS PHOTOS BY ANDY BLICQ

Bill Barlow takes fanfare to a new high.

**THE EXPRESS**  
WEEKLY NEWS

office will be closed.  
**December 24th to January 1st**  
for the holidays.

**Best Wishes at Christmastime**

With Our Thanks,

 **Ashern Insurance Agencies Ltd**  
**All Lines of Insurance**  
(204) 768-2674

**Merry Christmas**

From all your friends down at Gimli Ford

 **16 7th Ave, Gimli, MB**  
**Sales - 855-963-1818**

**Happy Holidays**

From All of Us

 **Countryside Home**  
building centre

Lot 1, Hwy 17 S  
Fisher Branch, MB  
**204-372-8501**

Reeve, Council and Staff would like to wish everyone a Merry Christmas and a safe and Happy New Year!

**HOLIDAY HOURS**  
The Ashern and Eriksdale Offices  
will be Closed Monday, December 24 at 12 noon  
and will re-open Wednesday, January 2nd, 2019 at 9:00 a.m.

**RURAL MUNICIPALITY OF** *West Interlake*



# Christmas craft show displays local artists talent



EXPRESS PHOTOS BY ROGER NEWMAN

The Gimli New Horizons 55-Plus Centre ended the year on a high note last Thursday with its always popular Christmas craft show. Artists and crafters from a variety of disciplines contributed to the success of the show. Photos from left to right, Photographer Jackie Poloski, Gimli New Horizons 55-Plus Centre past president, displayed pictures of two of her favourite spots - Mexico and Gimli Harbour. Artist Garth Gillespie commanded attention with his watercolours. Quilters Bonnie Dykes and Heather Dankochik made an impression with the quality of their work. Evya Bialek, an Arnes artist and crafter, was timely with her handmade Christmas dolls.

## Hot Artichoke, Caramelized Onion and Bacon Dip



### What You Need

- 1 tsp. oil
- 1 sweet onion, coarsely chopped
- 1 can (14 fl oz/398 ml) artichoke hearts, drained, chopped
- 1 cup Parmesan Grated Cheese
- 1 cup Miracle Whip Original Spread
- 4 slices fully cooked bacon, crumbled
- 1 green onion, sliced

### Make It

- Tap or click steps to mark as complete
- Heat oven to 350°F.
- Heat oil in small skillet on medium heat. Add sweet onions; cook 12 to 15 min. or until tender and golden brown, stirring occasionally. Remove from heat. Add all remaining ingredients except green onions; mix well.
- Spoon into shallow ovenproof dish sprayed with cooking spray.
- Bake 20 to 25 min. or until hot and bubbly. Sprinkle with green onions.

Season's Greetings to All  
Merry.  
**Bright.**  
Blessed.  
Beautiful.



(204) 641-5200



(204) 376-2881

*Celebrating the gifts of  
friendship & community*

Town of Arborg  
Mayor, Council  
& Staff

Merry Christmas and  
a Happy New Year  
to all our Customers

**AM Bruce Drilling**  
**(204) 768-2665**

### FLY & STAY VACATIONS

**Beautiful Victoria, BC.**  
March 5-19  
Vacation in Canada, and escape the hurried world to Victoria, where the climate is mild and gardens bloom all year.

**Palm Springs, California**  
April 4-11  
Tranquility awaits at the beautiful Palm Mountain Resort & Spa where you will spend 7 nights just steps away from the excitement of downtown.

Both include roundtrip airfare, transfers, accommodations, breakfast & 1 tour.  
Book by December 31 to guarantee your spot!

**EMBASSY TOURS 757-9383 1-800-723-8051**  
www.embassytours.ca E-mail: embassytours@mts.net Celebrating 26 Years

Take care of details so they don't have to. *Just ask Ken.*

**KEN LOEHMER**  
FUNERAL SERVICES

55 Main St, Teulon Call 204-886-0404 or visit www.klfuneralservices.ca

### THE Flicks CINEMA

319 First Street E., Stonewall, MB

**SHOWTIMES:**  
Please check individual listings  
Due to various picture lengths showtimes vary  
**204-467-8401**  
PROGRAM SUBJECT TO CHANGE WITHOUT NOTICE  
*Cash only*

**FRI-SAT-SUN DEC 21-22-23**  
**SPIDERMAN: INTO THE SPIDER-VERSE** at 7:30 pm Each Night  
Animated Violence **PG**

**FRI-SAT-SUN DEC 28-29-30**  
**AQUAMAN** at 8:00 pm Each Night  
Coarse Language; Violence **PG**

**Next Week: "Bumblebee"**  
Coarse Language; Violence **PG**



# Gimli's Wave Electronics celebrates grand re-opening with Telus deals

By Patricia Barrett

Gimli's Wave Electronics store, which is a Telus dealer, was buzzing with customers and good deals on Telus products during its grand re-opening celebration Dec. 15.

Gimli Mayor Lynn Greenberg was on hand to help cut the cake. He thanked owner Joe Mohan and Mohan's wife Lorraine and son Dustin for serving the community for 20 years.

"You provide a great service to the area. If you're at someone's house or at a social function and people start talking about their phone ... the first thing someone says is, 'Go see Joe and Dustin,'" said Greenberg. "So you're well known and well appreciated. Thank you for your service to the community."

In addition to the grand re-opening, Mohan and his staff are collecting food and monetary donations for Evergreen Basic Needs' food bank.

Customers who purchase a cuddly



Telus will donate all proceeds from the sale of its \$2 bunny to Evergreen Basic Needs.

Telus bunny for \$2 will be helping hundreds of Gimli and area families who struggle to get enough to eat. There's also a bin set up by the Christmas tree where people can drop off non-perishable food items.

"One hundred per cent of the proceeds goes towards EBN," said Mohan between customers.



EXPRESS PHOTOS BY PATRICIA BARRETT

Wave Electronics owner Joe Mohan (left) and Gimli Mayor Lynn Greenberg cut the cake to celebrate the grand re-opening of the newly designed store.



Customers browse the selection of accessories during the grand re-opening event.

**Merry Christmas**

Wishing you and your family peace and joy this holiday season.  
May God bless you in the New Year.

**JAMES BEZAN MP**  
SELKIRK—INTERLAKE—EASTMAN

228 MANITOBA AVENUE, SELKIRK MB R1A 0Y5  
OFFICE@JAMESBEZAN.COM • JAMESBEZAN.COM  
204-785-6151

**Seasons Greetings  
& A Happy  
New Year**

MAYOR, COUNCIL AND STAFF  
**RURAL MUNICIPALITY  
OF GIMLI**





# Bumper to Bumper helps with trail signage in Ashern



EXPRESS PHOTO SUBMITTED

In the past, snowmobile trails took over the old logging roads, hunting trails, and homestead trails, throughout the Interlake region. Over the years some trails were maintained by Snowman and some were forgotten like the trail that goes to the Manitoba Narrows. This trail winds through a spruce bluff, a farmer's field, and road allowance. Ashern Snowmobile Club president Jay Ruchotzke wanted to keep this trail open but needed some financial help to pay for the maintenance. Bumper To Bumper owner Lyle and Dianne Hornby of Ashern generously donated the funds to help keep the Narrows Trail open. In return the Ashern Snowmobile Club will recognize Bumper To Bumper Ashern as the sponsor of this trail with signage.



## PUBLIC NOTICE

### Centra Gas Manitoba Inc. (Centra) 2019/20 General Rate Application

Centra has applied to the Public Utilities Board (Board) for approval of new rates charged to natural gas customers effective August 1, 2019. Centra is seeking changes to the rates that cover Centra's cost of purchasing and transporting natural gas to Manitoba, effective August 1, 2019. Details are outlined in Centra's General Rate Application, available at: [www.hydro.mb.ca/regulatory\\_affairs/gas/gra\\_2019\\_2020/](http://www.hydro.mb.ca/regulatory_affairs/gas/gra_2019_2020/)

The impact of this Application is a decrease of approximately 6.2% or \$42 on the annual bill for a typical residential customer. Customer bill impacts are provided for Sales Service customer classes for a range of consumption levels in the table below.

2019/20 General Rate Application	Annual Bill Impact
Customer Class	% Change
Small General Service	(4.7%) – (7.7%)
Large General Service	0.5% – 0.8%
High Volume Firm (Sales Service)	0.5% – (13.8%)
Mainline (Sales Service)	(19.7%) – (13.2%)
Interruptible	(3.0%) – (14.3%)

It is Centra's intention to update the Application based on the natural gas market prices in effect just prior to the public hearing that the Public Utilities Board will schedule in 2019. The Board will publish a subsequent Notice indicating the approximate bill impacts for the August 1, 2019 rate change, by customer class, once this information is available.

Further details are available at: [www.pubmanitoba.ca](http://www.pubmanitoba.ca)

#### HOW DO I SHARE MY VIEWS?

You can share your views on the proposed rate increases with the Public Utilities Board in three ways:

- **Oral presentation** – If you wish to make an oral presentation to the Board at a Public Hearing, please register with the Public Utilities Board by writing to the Board office at the address listed below, or by sending an email to [publicutilities@gov.mb.ca](mailto:publicutilities@gov.mb.ca). Presentations are limited to a maximum of ten minutes.
- **Written comment** – If you would like to comment in writing on the rate increase, please go to [www.pubmanitoba.ca](http://www.pubmanitoba.ca) and provide your comment.
- **As an approved intervener** – If you want to actively participate in the public hearing as an Intervener, please go to [www.pubmanitoba.ca](http://www.pubmanitoba.ca) and register to become an intervener.

Manitoba Public Utilities Board  
400-330 Portage Avenue  
Winnipeg, Manitoba R3C 0C4  
Phone: 204 945 2638  
Email: [publicutilities@gov.mb.ca](mailto:publicutilities@gov.mb.ca)

Available in accessible formats upon request.



Five days notice required.



Wheelchair access is available.





THE **EXPRESS**  
WEEKLY NEWS



**PUBLISHER**  
Lana Meier



**SALES**  
Brett Mitchell



**REPORTER/PHOTOGRAPHER**  
Patricia Barrett



**SALES**  
Branden Meier



**PRODUCTION**  
Nicole Kapusta



**PRODUCTION**  
Debbie Strauss



**ADMINISTRATION**  
Corrie Sargent



**ADMINISTRATION**  
Jo-Anne Procter



**ADMINISTRATION**  
Allana Sawatzky



**ADMINISTRATION**  
Tracy Farmer



**SALES**  
Stephanie Oland Duncan



**DISTRIBUTION**  
Christy Brown



**PRINT**  
Dan Anderson



**SPORTS EDITOR**  
Brian Bowman

#### OUR SISTER PUBLICATIONS



# get informed

NEWS > VIEWS > GIMLI > ARBORG > HIGHWAY 6 > SURROUNDING AREAS

## Council approves mobile home park near Vesturland

By Patricia Barrett

Gimli council gave the go-ahead to a mobile home park after three public hearings and much discussion about how it might contribute to the future growth of Gimli.

The park received letters of support from residents living in Gimli and surrounding areas as well as opposition from some residents living in the Vesturland neighbourhood, which lies about 1,000 feet east of the site.

"We gave it conditional approval," said Mayor Lynn Greenberg a few days after council's regular meeting Dec. 12. "Conditions will be put into a development agreement between the municipality and the developer."

Bryan Couch of IV Development Solutions and his partners had pitched

the proposal to council in September, held an open house for residents and provided them with an overview of the homes, prices and site services.

Winkler-based Grandeur Housing will be supplying the homes, which will range from 900 to 1,600 square feet. The Canadian-owned company specializes in custom-built housing, including Ready-to-Move and manufactured homes, townhouses, condominiums and a variety of commercial buildings. The developers noted in previous presentations that the homes will meet and exceed all required building codes.

Further development of the site – 10 or 20 years down the road – may include the construction of an apartment building and two-family (de-

tached or semi-detached) dwellings. The single-family housing zone, which is proposed to run along the site's eastern boundary, won't be developed for another 30-plus years.

The land is bordered by bush, trees and a berm on its eastern boundary, by Highway 8 on its western boundary and is close to but not contiguous with PR 231 on its northern boundary. The mobile homes shouldn't be visible to residents living along the western edge of Vesturland (near Sigurbjorg Stefansson Early School) provided the developers maintain natural cover.

Couch told the *Express* last Friday that council is "very progressive" and

Continued on page 10

## Don't let an auto theft Grinch spoil the holiday season

Submitted

The number one cause of auto theft in Manitoba is the use of vehicle keys. Last year in Manitoba, more than 3,100 vehicles were stolen 90 per cent involving the use of keys.

With the arrival of winter weather, Manitoba Public Insurance urges all vehicle owners to avoid running vehicles unattended – whether to warm up or while dropping off holiday packages – unless equipped with a secure remote starting system.

Of all the vehicle thefts reported using vehicle keys last year, nearly 50 per cent involved keys left in the vehicle ignition or stowed somewhere else within the passenger compartment, according to Manitoba Public Insurance data. In other cases, vehicle keys were taken from homes or from purses and coats left in public places.

"Nearly all vehicles in Manitoba are now protected from theft with after-market or factory-installed electronic vehicle immobilizers," said Satvir Jatana, vice-president responsible for Communications, Manitoba Public Insurance. "While these devices prevent a vehicle's ignition from being defeated, they are rendered completely ineffective when auto thieves have access to vehicle keys or key fobs. This is why it is so important for vehicle owners to safeguard their vehicle keys at all times."

Vehicle thefts last year cost Manitoba ratepayers about \$17 million. Stolen vehicles are also used in the commission of other criminal offences and represent a significant public safety risk when driven erratically or at high speeds, often through residential neighbourhoods.

Holiday shoppers are also reminded to never leave shopping bags and other valuables in plain view when a vehicle is left unattended. Doing so can result in vehicle break-ins and create unnecessary stress over the holiday season. Valuables should always be removed from unattended vehicles or securely locked in the trunk or cargo area out of plain view.

How to protect your vehicle from theft

- Never leave your vehicle running when unattended
- Never leave your vehicle keys unattended
- Park in well-lit areas
- When parking your car, always close the windows and lock the doors
- Put valuables and packages in the trunk, where they're out of sight

#### ADVERTISING OR PRINT CONTACT INFORMATION

**Branden Meier** 204-641-4104  
ads@expressweeklynews.ca

**Stephanie Duncan** 204-461-4771  
ads@stonewallteulontribune.ca

**PHONE** 204-467-5836

#### > EMAIL US

Letters to the Editor: letters@expressweeklynews.ca  
Classifieds: classifieds@expressweeklynews.ca  
News: news@expressweeklynews.ca  
Print: igrphic@mymts.net

#### OUR EDITORIAL STAFF

**Patricia Barrett** 204-914-1293  
patricia@expressweeklynews.ca

**Brian Bowman** Sports Reporter  
sports@expressweeklynews.ca

#### ADDRESS

**74 Patterson Drive,  
Stonewall Industrial Park  
Box 39, Stonewall, MB R0C 2Z0**

#### PAPER DELIVERY OR FLYER CONCERNS

**Christy Brown**, Distribution Mgr.: 204-467-5836

The Express Weekly News is published Thursdays and distributed through Canada Post to 11,396 homes. Republishing in whole or in part without permission is strictly prohibited. Printed in Canada by Prolific Printing.

*This newspaper is supported 100% by advertising dollars. If you enjoy the paper and would like to see the newspaper grow and prosper visit any of the advertisers and businesses in our rural communities. – Keep your dollars working at home and shop local. Our commitment to you, the reader – we connect people through stories to build stronger communities.*

**Advertising Deadline: Monday 4:00 pm  
prior to Thursday Publication**

**View the Express Weekly News online at  
www.expressweeklynews.ca**





# getfishing

RED RIVER > CHALET BEACH > LAKE WINNIPEG

> ARNIE WEIDL

## Great memories to cherish with friends

Seasons' greetings my friends.

To a young Steve Morovek the tall pines and spruce trees around the shore of Lake Eleanor were mountainous, as were the huge round rock out cropping.

Now, thinking back, he remembered his father "Big Steve" standing beside him along with other boys and their fathers when they went up there to the Winnipeg Transit lodge each year for ice fishing just before Christmas. They stood admiring the sun gleaming off the pure white snow field of the lake when they first arrived then piled into the lodge. The men made a fire in the wood stove and heaters and the boys fought over which bunk would be theirs for their stay. The wood burning in the stove warmed the lodge as the men filled the air with the smell of hamburgers, eggs and toast being cooked. Dishes rattled, and the tables that had stood silent for so long now held mounds of food. Laughter and joking mixed with the sounds of men young and old eating together seemingly brought the old lodge back to life.

Afterwards, at dusk, with the fire in the stove slowly going down and cloaked in the dim soft orange light of lanterns, the men sat talking in hushed tones as the boys lay



EXPRESS PHOTO BY ARNIE WEIDL

Steve Morovek with one of his fine catches.

### Notice of Holiday Closures

Please note that Interlake-Eastern RHA's business offices, community health offices and clinics will be closed on Dec. 25, 26 and Jan. 1. Please call ahead if you are seeking service on Dec 24.

Labs in Whitemouth and Oakbank will be closed all day Dec. 24. Elsewhere in the Interlake-Eastern region, lab services will close at noon on Dec. 24 with the exception of the lab at Selkirk Regional Health Centre that will be open all day. All labs will be closed to the public on Dec. 25, 26 and Jan. 1.

Doctor availability will determine emergency department status. Please visit [www.ierha.ca](http://www.ierha.ca) and click on "Care in Your Hospital" and "Emergency department schedules" to see doctor availability in the region's emergency departments or call 1-866-267-5818 to listen to a recorded message.

Due to the holidays, hours will change at the following regional clinics:

Rapid Access to Addictions Medicine (RAAM) Clinic 237 Manitoba Avenue, Selkirk	
Closed	Alternative open days
Tuesday, December 25	Friday, December 28, 12:30 to 3:30 p.m.
Tuesday, January 1	Friday, January 4, 12:30 to 3:30 p.m.
Regular Tuesday RAAM clinic hours will resume January 8, 12:30 - 3:30 p.m.	

Quick Care Clinic #3-1020 Manitoba Avenue in Selkirk Crossing (across from Boston Pizza)	
Closed	Open
Tuesday, December 25	Monday, December 24, 10 a.m. to 5:00 p.m.
	Wednesday, December 26, 10:00 a.m. to 5:00 p.m.
	Monday, December 31, 10:00 a.m. to 5:00 p.m.
	Tuesday, January 1, 10:00 a.m. to 5:00 p.m.

Mobile Clinic	
Closed	
Tuesday, December 25	No clinic in Seymourville
Wednesday, December 26	No clinic in Gypsumville
Tuesday, January 1	No clinic in Seymourville
The mobile clinic will be operating on its regular schedule when not affected by a holiday closure	

We wish you and your family  
happy holidays and a  
healthy New Year!



Interlake-Eastern  
Regional Health Authority

half asleep on the floor. The men put the boys to bed then sat around the stove laughing as they recalled their Christmas experiences here when they were kids.

The boy Steve awoke at dawn and padding across the main room to the windows facing the frozen lake saw his dad not far from shore making holes in the ice with a chisel. He watched his dad raise the dark rod high then plunge it into the ice time after time making ice hole after hole. Then young Steve could hear others rising, making muffled sounds then hustling outdoors dressed only in underwear and heavy boots to find the outhouse.

Soon, the sun rose blazing through the large windows drawing the excited boys eagerly to the ice. They hastily made short work of toast, bacon and eggs, threw on their clothes and ran skipping and screaming carefree across the ice to the holes. It was Steve's joy to show his boy and the others how to work the homemade pop-ups he had built. He could not contain his laughter as one of the pop-ups flag sprung up signifying a fish had been caught and the young lads dashing for it "pounding the heck out of each other" to claim the fish.

This great Christmas fishing story was shared by Steve when I met him a few weeks ago. It's easy to see by his picture holding a fair sized fish that he is just as taken with fishing today as he was so many years ago at the lodge. Thank you Steve.

Last week on the Red ice upstream of Selkirk I ran into a couple of guys tailgate fishing. I pulled up to them and slipping out of "old red" asking them if they had caught anything. They both held up a pickerel with pleased looks on their faces. The younger had a short white beard, dark

eyebrows and a ready smile under a bright yellow touque while the elder had a magnificent moustache that flowed down to the sides of his chin. His eyes seemed serious which proved to be the opposite of his character. When I asked the elder Jules Du Puis of Winnipeg for a fishing story he thought for a minute then broke into a smile saying as he looked at Al Trudeau, his buddy, "yea, remember when a boat took off by itself?"

Apparently, Jules and Al along with twenty other guys went up to Grand Rapids and Cedar Lake and a little too much eating and "coffee" drinking got in the way of fishing the first day out.

The next overcast windy morning they were a little slow in getting moving. They were standing around on the shore talking, pan frying a breakfast of bacon, potatoes and coffee on their portable barbeque when Jules looking out to the water saw one of their boats happily gliding past them with the wind out to open water. Everybody stared at it in silence until an American in the party blurted out, "hey that's my boat!"

He and a buddy ran down shore where the boats were tied up, jumped into one and took off after the escaping craft. The group watched as they sped away after the errant boat. It took a while before they got back with both boats. They tied them up and as they joined the gang they saw all the breakfast food was eaten.

"Couldn't you have saved some for us," they cried out?

"Next time tie your boat up properly," Jules teased them, as he produced two full plates he had been hiding.

Happy holidays, bye for now.



that he and his partners are looking forward to working with them on establishing a development agreement. "What a good experience it was dealing with the Eastern Interlake Planning District, the RM administration and the new mayor and council," he said. "Nancy Thom [CAO of EIPD], Joann Murphy [CAO of RM of Gimli] and their teams were so positive to work with and very professional."

The EIPD ensured residents living beyond a 100-metre radius of the land received notice of the hearing last week as a "courtesy" although it was not legally required.

About four Vesturland residents expressed concerns about the development, including increased traffic on Solvin Road, said Greenberg. Couch brought with him mortgage specialist Shelly Stewart of One Link Mortgage to address residents' prior concerns about obtaining mobile home financing, a representative from Grandeur Housing and engineer John Arthur of Arthur Consulting, which will be working on the site design.

Increasing the availability of homes will help facilitate growth in the area, said the mayor, giving employees of local businesses an option to get a home. "It will also help with the promotion of our Industrial Park."

In its planning report, the EIPD noted that the municipality is in need of affordable housing for "all age groups," and that a mobile home park may be the answer. It also wrote that the developer is "working with the National Housing Co-Investment Fund through CMHC to aid in the costs associated with this development."

Assistant CAO Kelly Cosgrove said a temporary access road could be built off Highway 8 to accommodate heavy construction, but the main entrance to the site will be determined by council. There will also be a secondary entrance from Centre Avenue West.

The development will require an "engineered drainage plan with lot grades, engineered water and sewer works to be constructed in accordance with RM of Gimli Construction

Specifications, engineered roads and sidewalk construction, street lighting and public greenspace with a walking/cycle path," said Cosgrove.

Couch said IV Development plans to start construction in 2020.

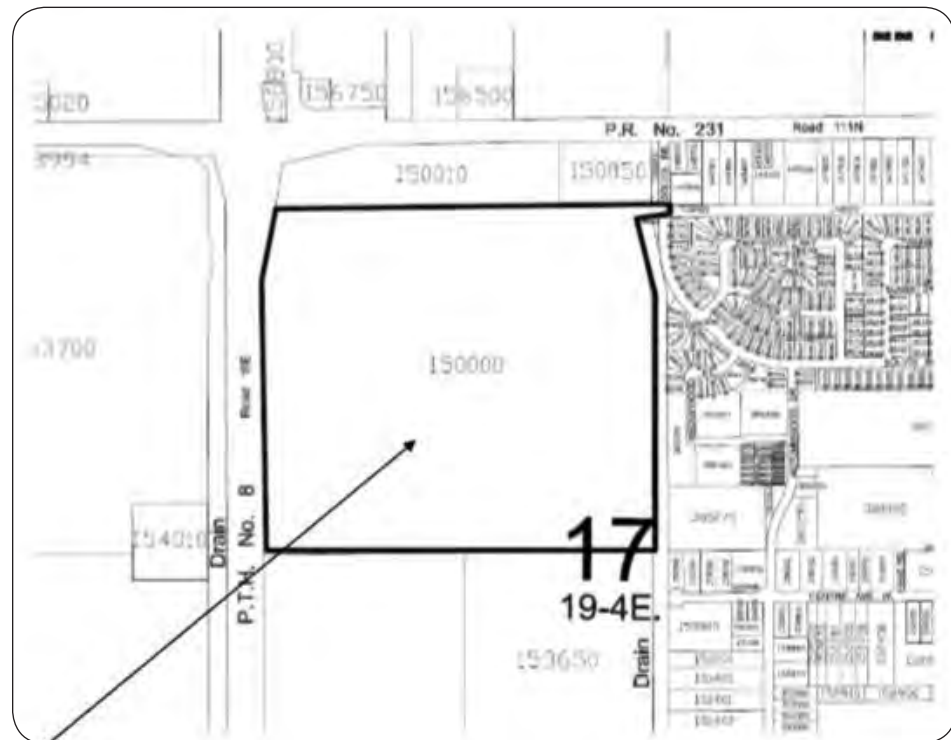


ILLUSTRATION COURTESY OF EASTERN INTERLAKE PLANNING DISTRICT  
 Illustration of mobile home park.



EXPRESS PHOTO BY PATRICIA BARRETT  
 The mobile home park will be developed in this treed area east of Highway 8 near the junction of PR 231.

CLIP & SAVE

This holiday season, know how to access emergency services in your community:

In the event of a medical emergency call 911 (or your local 10 digit emergency number if one is assigned to your area) to access paramedics who can administer lifesaving care and transfer you to the appropriate facility for the care you need.

On occasion, you may find a doctor is not available in your emergency department. To check emergency department status:

**CALL:** 1-866-267-5818 to hear a recorded message regarding the status of emergency departments in the region.

**VISIT US ONLINE:** [www.ierha.ca](http://www.ierha.ca) and click "Care in Your Hospital" and "Emergency Department Schedules" to view the emergency department schedule of doctor availability.

In the event that a doctor is not available in an emergency department that you have visited, please speak with a nurse who will help identify your care options. Interlake-Eastern RHA continues to recruit new doctors to the region to improve your ability to access reliable care.

Interlake-Eastern  
Regional Health Authority

Public Utilities Board

Régie des services publics

PUBLIC NOTICE

## Manitoba Hydro 2019/20 Electric Rate Application

Manitoba Hydro has applied to the Public Utilities Board (Board) for a 3.5 per cent increase to all electricity rates on April 1, 2019.

**For a residential customer not on electric heat** (using an average of 1,000 kilowatt-hours (kWh) per month), the impact of this rate increase is an additional \$3.30 per month.

**For a residential customer that has electric heat** (using an average of 2,000 kilowatt-hours (kWh) per month), the impact of this rate increase is an additional \$6.30 per month.

Further details are available at: [www.pubmanitoba.ca](http://www.pubmanitoba.ca)

### HOW DO I SHARE MY VIEWS?

You can share your views on the proposed rate increases with the Public Utilities Board in three ways:

- **Oral presentation** – If you wish to make an oral presentation to the Board at a Public Hearing, please register with the Public Utilities Board by writing to the Board office at the address listed below, or by sending an email to [publicutilities@gov.mb.ca](mailto:publicutilities@gov.mb.ca). Presentations are limited to a maximum of ten minutes.
- **Written comment** – If you would like to comment in writing on the rate increase, please go to [www.pubmanitoba.ca](http://www.pubmanitoba.ca) and provide your comment.
- **As an approved intervener** – If you want to actively participate in the public hearing as an Intervener, please go to [www.pubmanitoba.ca](http://www.pubmanitoba.ca) and register to become an intervener.

Manitoba Public Utilities Board  
 400-330 Portage Avenue  
 Winnipeg, Manitoba R3C 0C4  
 Phone: 204 945 2638  
 Email: [publicutilities@gov.mb.ca](mailto:publicutilities@gov.mb.ca)

Available in accessible formats upon request.



Five days notice required.



Wheelchair access is available.





# Lopi wear, underwear and fair ware make for a merry craft sale

By Patricia Barrett

Why not say farewell to cheap, mass-produced merchandise this holiday season and step into the world of handmade, homemade and fair trade.

From fudge that melts in your mouth (Farmhouse Fudge), pottery with a sgraffito touch (Nicole Combot-Harapiak) and antler-horn jewellery (Sticks & Stones Ink) to re-usable hygiene products (Butterwear), botanical-based makeup (Arbonne) and fair trade certified food, the vendors who set up shop last Saturday at Gimli's Johnson Hall had it all.

Zack Gross, outreach coordinator with the Manitoba Council for International Cooperation, was selling fair trade coffee, chocolate and textiles and helping consumers understand why buying fair trade products can literally make a world of difference.

Fair trade helps disadvantaged farmers and artisans make a better living by ensuring they get fair wages, he said. The Fair trade system also encourages safe working conditions, prohibits child slavery, promotes gender equality and protects the environment.

One brand of fair trade certified chocolate bar Gross was selling comes from Montreal-based Galerie au Chocolat. Galerie imports a velvety Belgian-made chocolate that is sourced from companies committed to protecting their cocoa plantation workers.

Gross said fair trade coffee comes in light, medium, dark and decaf and not all varieties taste the same.

Consumers can identify certified fair trade products by looking for a blue and green seal that depicts a stylized human figure and the words "FAIRTRADE" or "FAIRTRADE EQUITABLE."

Arnes-based Crystal Bantel was celebrating the official launch of her new business called Butterwear. She makes women's everyday underwear with a wide soft band that prevents wedgies, special underwear that won't put pressure on the belly of pregnant women and re-usable cloth incontinence and period pads.

"The maternity panties have a crisscross in front to accommodate a large belly," said Bantel, who makes the custom-order underwear out of her home. "When you're in your last month and you're about to pop, it's so comfortable."

She also makes cloth pads with a water-resistant backing material and wings that fold underneath the gusset and snap together. Commercially produced hygiene products contain chemicals that can cause rashes and are so expensive that many women can't afford them. British MP Danielle Rowley, in fact, called attention to "period poverty" this summer.

Gimli-based Linda Einarson makes fashionable knitwear and accessories out of lopi



Nicole Combot-Harapiak makes functional and decorative pottery using techniques such as sgraffito.

wool, which is sourced from long-haired Icelandic sheep.

"When my daughter was in Iceland, all the girls were wearing these wool flowers and she brought one back," she said. "I've made tons since. You can put them on a lapel or a hat."

Contact information for select participants:

- Manitoba Council for International Cooperation (fair trade information): 204.987.6420 or online at mcic.ca.
- Crystal Bantel, Butterwear: email [crystalscreativity@gmail.com](mailto:crystalscreativity@gmail.com) or visit Butterwear on Facebook and Instagram
- Potter and artist Nicole Combot-Harapiak: [nicole.harapiak@gmail.com](mailto:nicole.harapiak@gmail.com)
- Sheila Hiller, Sticks & Stones Ink: 204.642.4644 or



EXPRESS PHOTOS BY PATRICIA BARRETT  
Zack Gross from the Manitoba Council for International Cooperation promotes fair trade products.



Monica Wood, right, of Farmhouse Fudge makes a variety of flavours such as Rocky Road, Pumpkin Pie, Chocolate Explosion and Heath English Toffee. She also sells at the Arnes Market. Judy (left) bought a variety pack, saying the fudge is "rich and creamy and just the right amount of sweetness in it. You can't beat it."

email [lakelady56@hotmail.com](mailto:lakelady56@hotmail.com)

• Leanne Corbett, Arbonne botanical beauty products: 204.407.2842 or online

at <http://leannecorbett.arbonne.com>

• Cheryl Andrews, Norwex microfiber cloths: 204-641-4285.



Cheryl Andrews is an independent sales consultant for Norwex. The company's microfiber cloths don't require the use of detergents.



Artist Sheila Hillier of Sticks & Stones Ink in Gimli creates one-of-a-kind artistic pendants, buttons and other items.



Gimli-based Linda Einarson (right) with her sister Gail Syberg, makes knitwear out of Icelandic lopi wool.



Leanne Corbett is regional vice president of Arbonne skincare products and an independent consultant.



Crystal Bantel of Butterwear makes non-wedgie underwear for women, re-usable pads, pregnancy underwear and children's underwear.



# Time spent with family is the most valuable gift

By Natasha Tersigni

For local entrepreneur Danny Kleinsasser the Christmas season is a time of year when he can focus on two of his life's passion: family and charity.

Kleinsasser, owner and operator of Danny's Barbeque and Smokehouse, uses the Christmas season as a time to reconnect with his family and continue to teach his six children the importance of giving. While business is important to Kleinsasser who has independently run his barbeque operation for over 25 years, Christmas is a time of year that he takes a break for work and focuses what's most important to him.

"For me, my family and my children come first with everything. When it comes to Christmas time and other holidays I always take that opportunity to hang out with them and do things with them," said Kleinsasser.

A tradition that he adopted early in the creation of Danny Whole Hog is closing the business from Dec. 24 to Jan. 3, to ensure that he and his employees have time to spend with family uninterrupted. While this time period is a lucrative time of year for those in the catering business, it is important for Kleinsasser to take that break.

This year Kleinsasser and his family are going to spend their time off at their cottage at the Narrows where they will ice fish and then spend a few days skiing in Asessippi.

"I want all my employees to spend time with their family so I close the business to give them the same opportunity. Yes, we are giving up sales but that time at Christmas to spend with your family is more important," explained Kleinsasser.

"Whatever money we could have made it doesn't matter at the end of the day."

During the holiday season, Kleinsasser and his wife Jeanette also take time to ensure their children learn the importance of giving to others. While Kleinsasser is involved with charity work throughout the year, at Christmas he undertakes a few additional projects.

"I am trying to teach my children that Christmas is not just about your own family, but it is a giving time of year. I am usually involved in a lot of different charities which teaches my kids the principle of giving back and the importance of putting a smile on someone else face," said Kleinsasser who this year has donated pulled pork meals for over 60 hampers to be donated in the Selkirk area and is also supporting the One Big Day for Christmas event being held at the Garden City Shopping Centre on Dec. 14.

"I want to leave the lesson of giving with my children so when I am not around anymore, they can continue that tradition and care for their families and for other people as well."



TRIBUNE PHOTOS BY NATASHA TERSIGNI

Whether on a beach in Mexico or at their cottage at the Narrows, Manitoba, Danny Kleinsasser's annual holiday tradition is to spend time with his family. Pictured left to right, Danielle, Jeanette, Tirzah, Cassidy, Nehemiah, Ezra, Danny and Isaiah



Isaiah helps his sister Cassidy decorate the family Christmas tree.



The Kleinsasser's family annual holiday tradition is spending time with one another.

**Thank you for continuing to support your local co-op.**

**From all of us here, have a very Merry Christmas and a Happy New Year**

**Holiday Hours**

Monday	Dec 24th	- 8:00 am to 4:00 pm
Tuesday	Dec 25th	- CLOSED
Wednesday	Dec 26th	- CLOSED
Thursday	Dec 27th	- 8:00 am to 6:00 pm
Friday	Dec 28th	- 8:00 am to 8:00 pm
Saturday	Dec 29th	- 8:00 am to 6:00 pm
Sunday	Dec 30th	- CLOSED
Monday	Dec 31st	- 8:00 am to 6:00 pm
Tuesday	Jan 1st	- CLOSED
Wednesday	Returning to Regular Hours	

**Ukrainian Farmers Co-op**  
22 Tache St., Fisher Branch  
(204) 372-6202

Visit our page  
The Ukrainian Farmers  
Co-operative Ltd



# Moosehorn Christmas light display inspires others

By Kal Franchuk

For five years Dennis Rawluk has been setting up elaborate Christmas light displays at his home in Moosehorn. His creative, handmade scenes have drawn local visitors from the area and encouraged others to do the same.

Each year Rawluk crafts a new themed display and this year, 2018, is a nature scene with silhouettes cut from plywood and painted white in the shape of deer and trees. The scenes are arranged among several bare poplars and cut evergreens. The traditional multi-coloured lights are found just on his house with blue and white illuminating the calm winter scenery.

Rawluk started his display back in October when the weather was warmer. The poplars, which are made from fence posts, had to be pounded into the ground and the cut trees were anchored with rebar.

From there Rawluk added a little bit each day to create the winter scene. "[I] try to control myself so I have something for next year," he said.

The lights went on at the end of November and will stay on through the first week of January. Rawluk welcomes the steady stream of visitors that pass by his home to view the display, including the local handivan.

Some creations from last year are still showcased in his backyard which visitors can walk through. Rawluk owns four lots and his property is frequently used for photos and even his son's wedding.

Rawluk says that his previous experience as a farmer helped to inspire



the use of nature in his displays. It also means that he sources his cut trees from local farms where he can help by cutting the ones causing a nuisance.

The community spirit Rawluk creates is priceless but it's hard to imagine this sort of display comes cheap. Still, Rawluk is not sure how much the display has cost.

A lot of material used was recycled and homemade which helps keep costs down. He also switched the LED lights which not only use less energy but are much brighter.

"I don't even know what my Hydro will be this year," Rawluk chuckled.

Rawluk called his display an "amusement park for the winter," and is pleased to do it for the community. It has sparked others in the area to do the same.

Currently, the R.M. of Grahamdale puts on an annual Christmas light competition which Rawluk's efforts have helped encourage.

There's still time to see this magnificent light display located at 15 Shepherd St. in Moosehorn.



EXPRESS PHOTO SUBMITTED

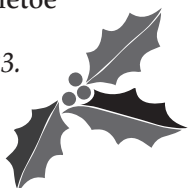
Dennis Rawluk's yard in Moosehorn has become a tourist attraction for those who love Christmas lights and outdoor nature displays.

## Christmas Trivia Game

Answers:

1. Dasher, Dancer, Prancer, Vixen, Comet, Cupid, Donner, Blitzen, Rudolph
2. His hat.
3. Whoville
4. A Red Ryder BB Gun
5. Buddy
6. Ghost of Christmas Past, Ghost of Christmas Present, Ghost of Christmas Yet to Come
7. Elvis Presley
8. Eleven Pipers Piping
9. Twice
10. Under the mistletoe

See questions page 23.



**MERRY CHRISTMAS! AND A HAPPY NEW YEAR!**

**Gimli Arbog VETERINARY SERVICES**  
Gimli 204-642-8398  
Arbog 204-376-2797

*Wishing You a  
Holiday Wrapped  
in Happiness*

**PHARMASAVE®**  
45 Centre St., Gimli (204) 642-5504

**Wishes Merry & Bright**

**RAWCLIFFE GRANGE STOCK FARM**  
EST. 1889  
Registered Purebred Polled Herefords  
[www.rawcliffe.ca](http://www.rawcliffe.ca)

**BEST WISHES**

**STEVENSON'S FOODS**  
56 Main St., Lundar  
204-762-5714



# Gimli church collects gifts for domestic violence victims

By Roger Newman

Family violence never takes a holiday.

That sad reality motivates the women of Gimli's Bayview Evangelical Free Church to make twice yearly donations of children's toys and feminine products to the Interlake Women's Resource Centre (IWRC).

With the guidance of co-pastor Judy Gilbert, the church women collect the items at a potluck supper and deliver them to the Gimli-based IWRC during the seasons of both Christmas and spring.

That contribution is much appreciated by the women's resource centre which provides services to domestic violence victims living in the vast area between Hecla Island and Stonewall.

"Without the generosity of the Bayview women, we wouldn't be able to do as much as we do for the women and children we

serve," said IWRC Director Jennifer Campbell Moore as she viewed the latest collection beside the Christmas tree at the Bayview church on South Colonization Rd.

Gilbert and co-pastor Richard Gilbert know something about dealing with hardship because the husband and wife team served across Canada with the Salvation Army for 35 years. They settled at Winnipeg Beach five years ago and have been co-pastors at Bayview Evangelical for the past three years.

"I have always been a strong advocate for women's rights and for helping people battle addictions," says Judy Gilbert who is originally from Orillia, Ont., north of Toronto. "I hope other churches will become involved in projects like ours because violence against women is a year-round struggle."



EXPRESS PHOTO BY ROGER NEWMAN

Gimli's Bayview Evangelical Church co-pastor Judy Gilbert, right, presents a hamper full of toys and feminine products to Jennifer Campbell Moore, director of the Interlake Women's Resource Centre.

With Our Thanks,

**DOMO BUMPER TO BUMPER**

**HAPPY HOLIDAYS!**

**Danielson Garage**  
15 Main St. W, Lundar  
(204) 762-5231

*A Wish for You at the Holidays*

**MAZERGROUP**  
210 St. Phillips Dr., Arborg  
204-376-5600

"A Proud Past, A Strong Future"

**Warmest Wishes at Christmastime**

**EDDIE'S GRAVEL SUPPLY LTD.**  
Serving the Interlake for over 65 years.  
Winnipeg Beach (204) 389-2023  
eddiegravelsupply.com

Warm wishes to our many best friends at this joyous time of year!

**Quarry PETS**  
Supplies & More  
Stonewall 204-467-5924

**Merry Christmas and Happy New Year!**

**Derek JOHNSON**  
MLA for Interlake  
interlakemla@gmail.com

**Jeff WHARTON**  
MLA for Gimli  
gimlica@mymts.net

**Bacon-Cheese Coins**

Prep Time 15min.  
Total Time 1hr. 33min.  
Servings 20 servings, 2 coins (13 g) each

**What You Need**

- 1 frozen pre-rolled puff pastry sheet (1/2 of 425-g pkg.), thawed
- 1/4 cup Philadelphia Herb & Garlic Cream Cheese Product
- 1/4 cup Oscar Mayer Real Bacon Bits
- 1/2 cup Cracker Barrel Shredded Old Cheddar Cheese
- 1 egg yolk, beaten

**Make It**

Tap or click steps to mark as complete

- Unroll pastry onto parchment-covered baking sheet; cut cross-wise in half to make 2 rectangles. Spread with cream cheese product, leaving 1/2-inch border on one long side of each.
- Sprinkle with bacon and cheddar. Brush borders of pastry with egg. Roll up each tightly to form log, starting at side without the border. Freeze 1 hour.
- Heat oven to 400°F. Cut each log into 20 (1/2-inch-thick) slices. Return, cut sides down, to prepared baking sheet.
- Bake 16 to 18 min. or until golden brown.





**MS 170**  
Gas Chain Saw



Displacement.....30.1 cc  
Power Output.....1.3 kW  
Weight.....3.9 kg (8.6 lb)\*



\$259<sup>95</sup>

MSRP \$289.95  
with 16" bar

*Fall*  
**SAVINGS**  
2018

**RECEIVE A FREE WOOD-PRO™ KIT**  
with the purchase of any eligible STIHL Chain Saw.\*\*

• Woodsman® Carrying Case • OILOMATIC® Chain • STIHL Hat

\*\*Don't miss your chance to get the Wood-Pro™ Kit. Simply purchase any one of the following chain saws and you will receive a STIHL wood-Pro™ Kit FREE. This kit includes: a Woodsman® Carrying Case, STIHL hat and a replacement loop of OILOMATIC® chain - an \$85 value! Hat may not be exactly as shown. While supplies last. Eligible Models: MS 170, MS 171, MS 180 C-BE, MS 181 C-BE, MS 193 C-E, MS 211, MS 241 C-M, MS 250, MS 251, MS 251 C-BE, MS 261 C-M, MS 271, MS 291 C-BE, MS 362 C-M and MS 391.



**MS 180 C-BE**  
Gas Chain Saw

31.8 cc / 1.5 kW / 4.2 kg (9.3 lb)\*



**\$379<sup>95</sup>**

MSRP  
with 16" bar

**MS 250**  
Gas Chain Saw

45.4 cc / 2.3 kW / 4.6 kg (10.1 lb)\*



**\$449<sup>95</sup>**

MSRP \$459.95  
with 16" bar

**MS 271**  
Gas Chain Saw

50.2 cc / 2.6 kW / 5.6 kg (12.3 lb)\*



**\$549<sup>95</sup>**

MSRP \$569.95  
with 16" bar

**MS 362 C-M**  
Gas Chain Saw

59.0 cc / 3.5 kW / 5.6 kg (12.3 lb)\*



**\$899<sup>95</sup>**

MSRP \$969.95  
with 16" bar

**LIMITED TIME ONLY**

    | [STIHLCanada](http://STIHLCanada.com) [www.stihl.ca](http://www.stihl.ca)



**MS 291**  
Gas Chain Saw



**\$499<sup>95</sup>**

MSRP \$609.95  
with 16" bar

55.5 cc / 2.8 kW / 5.6 kg (12.3 lb)\*



Dealers may sell for less. Illustrations and descriptions are as accurate as known at the time of publication and are subject to change without notice. STIHL Limited is not responsible for a printing error, the local STIHL Dealer has the final authority to set product pricing. Pricing valid at participating dealers only. \*Weight with powerhead only.

**SHACHTAY**  
**SALES & SERVICE LTD.**  
[www.shachtay.com](http://www.shachtay.com)

**204-376-5233**  
Arborg, Manitoba  
Family Owned  
*Servicing the Interlake for 52 Years!*



# Ring in the festive season



EXPRESS PHOTO BY TAMMY EINARSON

Approximatley 70 students from Riverton and Arborg collegiates showed their musical talents during an annual winter concert for the community last Thursday evening at the Riverton Hall.

## Christmas Punch



### Ingredients

- 1 bottle of 7-up or Sprite
  - 1 bottle of Cranberry Juice
- ### Blend
- 1 cup of sugar (try to use superfine sugar if you can find it)
  - 1 cup frozen lemonade concentrate (thawed)
  - 1 cup frozen orange juice concentrate (thawed)
  - ice
  - water (for amount, see below)
  - garnishes: lemon slices, cranberries, fresh rosemary sprigs

### Instructions

1. Combine the 7-up or Sprite and the cranberry juice blend. Add the sugar, and stir vigorously until combined.
2. Add the thawed concentrates, stir.
3. If you want a strong punch you can leave as is and just add some ice. You may wish to dilute with up to three cups of water (add water to taste) depending on your personal preference. Remember adding ice will also dilute the punch a bit so don't go overboard on both ice and water.
4. Add your garnishes-- a bag of fresh cranberries, lemon slices (wash the lemons well if including the peels), perhaps a sprig of fresh rosemary or two for a fresh kick.
5. \*\* Note: You can also make this ahead of time-- simply add all ingredients EXCEPT the garnishes and bubbly (either champagne or soda). Refrigerate for a few hours and add the remaining ingredients when guests arrive. \*\*

## Celebrating the Gifts of Friendship & Community

As we wrap up another year, we think about how lucky we are to know good folks like you. Thanks for making us feel so at home here. We sincerely appreciate your patronage and support.

Merry Christmas and Happy New Year from our entire team!

 **QUARRY**  
PHYSIOTHERAPY  
AN *inMotion* CLINIC

Stonewall • 204-467-9101



## Christmas Is Coming!

and We Want to Wish Everyone a Happy Holidays

**Rick Scharf Appliance & Electric**  
Lundar (204) 762-5600

## Season's Greetings



**LEO'S**  
SALES & SERVICE LTD.

Thanking our customers for their valued support for over 78 years of continuous service

[www.leoscasaih.com](http://www.leoscasaih.com)  
Toll Free: 1 866-694-4978

North Perimeter and Sturgeon Road, Winnipeg, Manitoba





# Ready. Set. SHOP!

Shop at participating businesses  
Dec 1-30 for your chance to

**WIN \$1000 in Santa Bucks**

*With every purchase made from Dec. 1 thru Dec. 30  
shoppers will receive a ballot for a chance to win!*

**Interlake Co-op,**  
24 Railway Ave, Eriksdale



**Arborg Home Hardware,**  
451 Main St, Arborg



**Interlake Co-op,**  
253 Main St, Arborg



**HP Tergesen & Sons,**  
82 1st Ave, Gimli

**Riverton Co-op,**  
39 Riverton Ave, Riverton



**Moosehorn Co-op,**  
1 Main St, Moosehorn



**Ashern Co-op,**  
53 Main St, Ashern



**Gimli Snowmobile Centre,**  
HWY 9, Gimli



**Pharmasave,**  
45 Centre St, Gimli



**Ukrainian Farmers Co-op,**  
22 Tache St, Fisher Branch



**Interlake Auto & Tractor Parts,**  
161 Sunset Blvd, Arborg



**Arborg Pharmacy,**  
275 Main St, Arborg



**The Wave Electronics,**  
66 1st Ave, Gimli



**KC Enterprises,**  
19 156 Gimli Park Rd, Gimli



**Johnson's Fashion & Footwear,**  
76 Centre St, Gimli



**Brennivins Pizza Hus**  
70 1st Ave, Gimli



You can spend your  
prize of **Santa Bucks**  
at any of our participating businesses.  
**So many ways to spend it!**



1 Ballot per purchase unless otherwise specified. \*Receive minimum of one ballot per purchase and/or one ballot per \$100 spent at specific businesses. Must be 18 years old to enter.  
Express employees and spouses are ineligible. Draw to take place Wednesday, January 16th, 2019. Winner will be contacted by phone.

Brought to you by: **Your Local Participating Businesses** and **THE EXPRESS WEEKLY NEWS**



# Gimli students celebrate Christmas with music concerts

By Roger Newman

Gimli is alive with the sound of music this Christmas.

Two major concerts have already taken place and several more are scheduled before Santa arrives.

Audiences have already been sent home humming by the Gimli High School's annual winter concert and two performances by the Westshore Singers at Gimli Lutheran Church. New touches - in both cases - kept the concerts fresh and interesting for concertgoers who couldn't claim it was the same old, same old.

Gimli High, featured student conductors instead of the usual practice of having a music teacher waving a baton in front of its grade 11-12 concert band. The student conductors were Sigrid Belanger, Braden Yablonski and Jasmine Henry who respectively led their concert band through "Chorale and Canon", "Night" and "Let it Snow". Equally creative was the Grade nine concert band's renditions of "Shenandoah" and "Spy Games" plus the Grade 10 band's: "Terezin" accompanied by poetry read by Emma Gray, Hannah Collard and Tommy Pittman.

The variety for audience members also included the GHS vocal ensemble, a brass quintet, a jazz band and a jazz orchestra. Enchanting the experience for the audience were such familiar tunes as "Homeward Bound",



Sigrid Belanger made her debut as a conductor at the concert.

Hogan's Heroes March", "Send in the Clowns" and "O Come All Ye Faithful"

The Westshore Singers concerts also featured well-known carols plus guest performances by alto horn player Bill Barlow and violinist Andrew Morican. Barlow, a retired Gimli High teacher and former town mayor, drew a laugh from the audience when he confided he'd taken up the brass band horn at age eight and had now been playing it for "almost 30 years".

The unofficial Gimli music festival continues this week with concerts at the Early and Middle schools plus the Evergreen music teachers' always well attended concert Fri., Dec. 21 at 7 p.m. in Johnson Hall.



EXPRESS PHOTOS BY ROGER NEWMAN

The Gimli High School's vocal ensemble was popular with the audience at their recent winter concert.



Members of the trombone section were prominent at the winter concert.



*Thank you to all who have made this a wonderful year. We appreciate your business!*

**THE Home STORE**

Hwy #9 & Gimli Park Rd.,  
Gimli 204-642-8585  
thehomestoregimli.com

**SEASON'S GREETINGS**

*We want to wish everyone a Merry Christmas and a Happy New Year*

*You're at home here.*



Ashern, MB 204-768-2546 Moosehorn, MB 204-768-2770

**RM of Coldwell  
Reeve & Council and staff**

*Season's Greetings*



**RANDY'S**

Hwy. 6 Lundar, MB 204.762.5815  
www.randystire.com



# Name That Christmas Song

A lyric from the song is given.  
In what song would find the lyric?

**1. "Round yon virgin mother and child"**

- a. Jingle Bells
- b. Silent Night
- c. I'll be Home for Christmas
- d. We Three Kings

**2. "And Heaven and nature sing"**

- a. Away in a Manger
- b. Joy to the World
- c. While Shepherds Watched
- d. Deck the Halls
- e. God Rest Ye Merry Gentlemen

**3. "Tis the season to be jolly"**

- a. Jingle Bells
- b. While Shepherds Watched
- c. Deck the Halls
- d. God Rest Ye Merry Gentlemen

**4. "God and sinners reconciled"**

- a. O Come O Come Emmanuel
- b. O come All Ye Faithful
- c. Hark the Herald Angels
- d. The First Noel

**5. "Disperse the gloomy clouds of night"**

- a. O Come All Ye Faithful
- b. O Come O Come Emmanuel
- c. Hark the Herald Angels
- d. The First Noel

**6. "Joyful and triumphant"**

- a. O Come All Ye Faithful
- b. Joy to the World
- c. Deck the Halls
- d. Ave Maria

**7. "Looked down where he lay"**

- a. The First Noel
- b. Little Town of Bethlehem
- c. Joy to the World
- d. Away in a Manger

**8. "O tidings of comfort and Joy"**

- a. God Rest Ye Merry Gentlemen
- b. The First Noel
- c. Ding Dong Merrily on High
- d. Away in a Manger

**9. "On a cold winter's night that was so deep"**

- a. Away in a Manger
- b. The First Noel
- c. Ave Maria
- d. Deck the Halls

**10. "Hang a shining star upon the highest bough"**

- a. O Come O Come Emmanuel
- b. Have Yourself a Merry Little Christmas
- c. Hark the Herald Angels
- d. Frosty the Snowman

**11. "City sidewalk, busy sidewalks, dressed in holiday style"**

- a. Joy to the World
- b. Deck the Halls
- c. Rudolf the Red Nosed Reindeer
- d. Silver Bells

**12. "Please have snow and mistletoe and presents under the tree"**

- a. Beginning to Look a Lot Like Christmas
- b. Silent Night
- c. I'll Be Home For Christmas
- d. Jingle Bells

**13. "Somebody snatched on me"**

- a. Bill's Christmas Treat
- b. The First Noel
- c. Nuttin' For Christmas
- d. Deck the Halls

**14. "Bearing gifts we traverse afar"**

- a. Jingle Bells
- b. Silent Night
- c. I'll be Home for Christmas
- d. We Three Kings

**15. "Come on, it's lovely weather"**

- a. Deck the Halls
- b. While Shepherds Watched
- c. Jingle Bells
- d. Sleigh Ride



# Merry Christmas & Happy New Year

From the staff and management at Sigfusson Northern





# Tradition continues with Yule Lads and the Icelandic Christmas Cat

By Teresa Carey

For Icelanders, Christmas is a mystical time of year when visitations by folkloric beings can be expected. Icelandic children will most certainly encounter the Yule Lads, called the Jólaveinar in Icelandic. They are Christmas trolls or elves that show up one at a time, for 13 days before Christmas, each staying for 13 days, the last of them leaving on Jan. 6.

"The Jólaveinar aren't bad though. Pranksters, sure. Pests, yeah," said Signy McInnis, an Arborg mother who has kept the lore alive in her household.

"If you pay attention each evening before they come and leave them treats like skyr (an Icelandic dish consisting of curdled milk), or sausages—their names tell you what they like—chances are they won't play pranks on you. They're just hungry," McInnis said. "For children who leave a shoe in the window, they'll leave a treat or small toy when they pass by."

The Yule Lads each have their own penchants. If you own sheep, beware of Stekkjarstaur (Sheep-Cote Clod), the first Yule Lad to arrive, as he likes to harass them, and when the next, Giljagaur (Gully Gawlk) comes, guard the milk in the cow shed or he'll run off with it. Four lads will follow on successive nights: Stúfur (Stubby),

Pvörusleikir (Spoon-Licker), Pottaskefill (Pot-Scraper), and Askasleikir (Bowl-Licker). All they will want is the food left on your dishes and utensils.

Hurðaskellir (Door-Slammer), Skyrgámur (Skyr-Gobbler), Bjúgnakrækir (Sausage-Swiper), Gluggagægir (Window-Peeper), Gáttaþefur (Doorway-Sniffer), Ketkrókur (Meat-Hook), Kertasníkir (Candle-Stealer) are the other Yule Lads Icelandic children will be on the lookout for.

While the Jólaveinar are but harmless pranksters, their mother, Gryla, is said to be on the lookout around Christmas for Icelandic children who have misbehaved. The family owns a cat, known as the Icelandic Christmas Cat. It is a fearsome, child-devouring creature who follows along with the Yule Lads.

"The cat doesn't eat children who are bad," McInnis explained. "He eats people who don't get new clothes for Christmas. If a person didn't get new clothes for Christmas, it meant they didn't have anyone who loved them, and those were the ones the cat went for. The ones not loved."

"The cat has been a great way to keep kids excited to get clothes for Christmas," McInnis said. "My daughter Aleesha has taken it upon herself for a few years now to make sure everyone in our family gets some form

of clothing for Christmas so they don't get eaten by the cat."

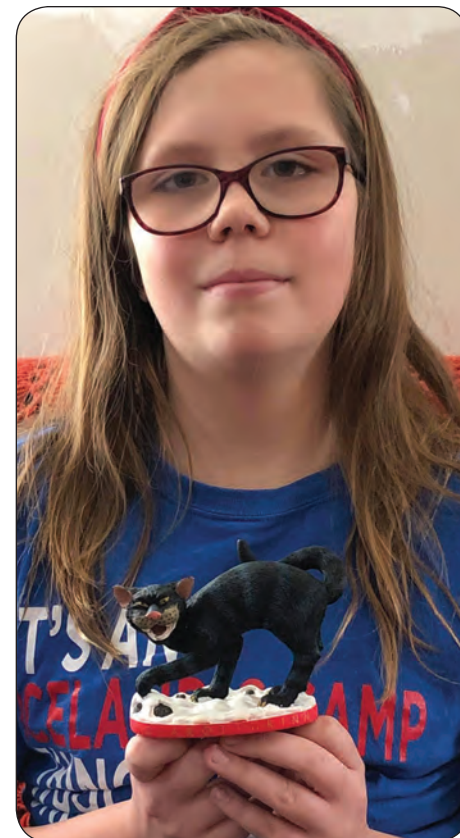
"We used to have the Jólaveinar visit our house and leave treats in Aleesha's shoe in the window, but she turned 12, so they stopped visiting us, but they do still visit my 4 year old niece in Gimli," McInnis said.

"This has always been a fun part of Christmas for our family. It's always fun to see the excitement on the kid's faces when they jump out of bed in the mornings to see what treats were left in the shoe. Aleesha says her favourite part of this tradition was checking her shoe in the mornings to see what she got."

EXPRESS PHOTO

BY SIGNY MCINNIS

Twelve-year-old Aleesha McInnis holds a figurine of the Icelandic Christmas Cat, a fearsome creature thought to devour children who have not received new clothes for Christmas.



**MERRY CHRISTMAS**

**HAPPY NEW YEAR**

**Thank you for all your business in 2018  
from all of us at J. Brandt Enterprises!**

**We look forward to working with you in the coming year!**

**J. Brandt ENTERPRISES**

**204-762-5392**

**HAPPY HOLIDAY WISHES!**

**LUNDAR INNOVATIVE SUPPLY**

**29 Main St. Lundar lundar-supply@hotmail.com 204-762-5661**

**Wishes Merry & Bright**

Christmas Eve 8-4  
Christmas Day Closed  
Boxing Day Closed  
New Years Eve 8-4  
New Years Day Closed

**Arborg Home hardware building centre**

**Here's How.**

**451 Main Street, Arborg  
204-376-3090**





# USED VEHICLE CLEARANCE



**2017 EDGE  
SEL 4WD  
\$32,995**



**2017 ESCAPE  
SE 4WD  
\$17,995**



**2017 EXPLORER  
4WD  
\$23,995**



**2018 ESCAPE  
TITANIUM 4WD  
\$31,995**



**2015 F150  
S/CREW  
XTR 4X4  
\$27,995**



**2016 F150  
S/CREW  
SPORT 4X4  
\$26,995**



**2015 ESCAPE  
SE 4WD  
\$15,995  
STK #12288A**



**2015 TRANIST  
CARGO  
\$25,995**



**2014 EXPLORER  
LIMITED 4WD  
\$25,995**



**2014 F150  
S/CREW FX4  
\$29,995**



**2013 ESCAPE  
SE  
\$11,995**



**2012 F150  
S/CREW  
XTR 4X4  
\$12,995**



**2011 EDGE  
SEL AWD  
\$18,995**



**2011 F150  
S/CREW  
XTR 4X4  
\$19,995**



**2010 EDGE  
LIMITED  
AWD  
\$14,995**



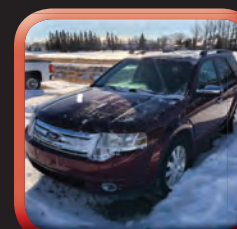
**2009 CHEV  
CREW CAB LS  
4X4  
\$10,995**



**2013 FIESTA  
SE  
\$7,995**



**2016 FUSION  
SE  
\$14,995**



**2008 TAURUS  
X LIMITED  
AWD  
\$10,995**



**2012 FUSION  
SEL AWD  
\$11,995**



**2010 IMPREZA  
HATCH  
AWD  
\$11,995**



**2010 INFINITI  
G37  
\$15,995**

**STOP IN  
TODAY  
AND  
CHECK OUT  
THESE  
GREAT USED  
VEHICLES**

ALL PRICES ARE PLUS TAXES. SEE DEALER FOR DETAILS.



**16-7TH AVENUE, GIMLI, MB  
SALES - 855-963-1818**

Dealer  
#5358





## Ice skating with Santa

EXPRESS PHOTO BY ROGER NEWMAN

A Sunday morning pancake breakfast followed by skating with Santa completed the pre-Christmas program at the Gimli Rec Centre. Taking a spin on the ice with Santa and rec centre programmer elf Brenna Philp were youngsters Taryn and Adley Gibson.

## Best Holiday Wishes

from the Reeve, Council, Staff  
& LUD Committee



Rural Municipality of  
**FISHER**



## Warmest Wishes

from everyone at



441 River Rd, Arborg  
(204) 376-2247



Eriksdale  
Redi-Mix Concrete  
(204) 739-5334  
Eriksdale, MB



from everyone at



276 Ardal St.,  
Arborg, MB  
(204) 376-5233  
www.shachtay.com

## Christmas Tree Cheese Board



What you need:

- 200 g Cracker Barrel Extra Old Cheddar Cheese, cut into 3/4-inch cubes
- 200 g Cracker Barrel Marble Cheddar Cheese, cut into 3/4-inch cubes
- 200 g Cracker Barrel Monterey Jack Cheese, cut into 3/4-inch cubes
- 200 g Cracker Barrel Havarti Cheese, cut into 3/4-inch cubes
- 100 g Cracker Barrel Mozzarella Cheese, cut into 3/4-inch cubes
- 1 lb. (450 g) each seedless green and red grapes
- 1 pkg. (40 g) fresh thyme sprigs
- 2 Tbsp. Philadelphia Cream Cheese Product
- 2 Tbsp. finely chopped fresh parsley
- 1 piece celery (2 inch)

Make it:

Tap or click steps to mark as complete

• Arrange cheese cubes and grapes in rows on platter or cutting board to resemble a Christmas tree shape, ending with a row of mozzarella at the top.

• Add thyme sprigs between rows as shown in photo.

• Roll cream cheese product into ball, then coat with parsley; place at top of tree. Place celery at bottom for the tree trunk.

*Wishing you a Merry Christmas  
and a Happy New Year.*



**McMunn & Yates**  
Building Supplies

16 Main St,  
Eriksdale, MB  
(204) 739-2110

## Tidings of Comfort & Joy

At Christmas time, may the company of loved ones present  
and the fond memories of those who have passed surround  
you with happiness and fill your heart with peace.



**Gilbart Funeral Home Ltd.**

Chapels in Selkirk & Gimli

1-800-230-6482 • 1-204-482-3271

www.gilbartfuneralhome.com



# Icelandic River Community Foundation funds special programs

By Patricia Barrett

The Icelandic River Community Foundation, a charity that supports the overall well-being of residents in the municipality of Bifrost-Riverton, funded three programs this year.

The IRCF donated \$3,444.50 to the Riverdale Place Workshop, which provides job opportunities to adults with disabilities. The money will help the centre pay for a new mobility van it bought earlier this year.

"We're a community-based foundation and we look for ways to help promote wellness and other things in the community," said IRCF chair Donna Gislason. "We thought it would be a very good thing to help Riverdale because they do a lot of good things for the community."

The IRCF was formed in 2010 to improve the lives of those living in Arborg, Riverton and the municipality of Bifrost-Riverton. Funds held by the former Arborg & Districts Health Centre Foundation were transferred into the IRCF and additional start-up funds were donated by Noventis Credit Union. The charity has a board of directors consisting of community leaders and is assisted by the Community Foundations of Canada and the Winnipeg Foundation.

The IRCF invests donations in a permanent fund and each year the investment income is used to support the betterment of the community in

the areas of health care, education, seniors and children's services, culture and heritage, the environment and recreation.

Riverdale manager Alex Janower said he, the staff and clients are so grateful for the financial assistance.

"The workshop really appreciates the donation," he said. "It will be very helpful."

The foundation also donated funds to the Arborg Personal Care Home, which purchased an examination chair. The special chair has side tables, a step, a foot rest and it fully reclines. Doctors, nurses and lab technologists use the chair for examinations, treatments and other procedures. The foot care nurse also uses it for treatments.

"It has been a great asset for the Arborg Personal Care Home and those it cares for," said spokes-persons Al and Judy Friederici.

The IRCF also donated \$549 to the Arborg-Bifrost Recreation Commission for children's soccer equipment and practice pinnies.

"We're here to support the community," said Gislason. "We focus quite a bit on health care and wellness in the community, but we're starting to do a little bit of recreation."

For more information about the Icelandic River Community Foundation or to donate, call (204) 376-5742 or (204) 641-5112 or visit online at <https://www.ircf.ca>



On behalf of the Icelandic River Community Foundation, Donna Gislason, Judy Nichol and Lorne Floyd (far left) presented a cheque for \$3,444.50 to Alex Janower and staff and clients at Arborg's Riverdale Place Workshop.



From left treasurer John Sigurdson, chair Donna Gislason, Recreation Commission vice chair Joanne Johnson and soccer players Kiera Chwaliboga, Shannon Bodnarus and Bryce Bodnarus.



**EXPRESS PHOTOS SUBMITTED BY DONNA GISLASON**  
The IRCF donated funds to the Arborg PCH for a special chair. From left Clinical Team Manager Sheri Brennan, IRCF chair Donna Gislason, Clinical Resource Nurse Linda Oddlielson and IRCF board member Judy Nichol.

## Christmas Trivia Game

Questions:

Answers

- |   |  |
|---|--|
| 1. Name Santa's reindeer  |  |
| 2. What magic article of clothing brings Frosty the Snowman to life?              |  |
| 3. The Grinch tried to take Christmas away from the residents of what town?       |  |
| 4. Ralphie (in A Christmas Story) only wants one thing for Christmas. What is it? |  |
| 5. What is the name of the main character in Elf?                                 |  |
| 6. Name the three ghosts that come to visit Scrooge.                              |  |
| 7. Who is the most known for singing Blue Christmas?                              |  |
| 8. On the 11th day of Christmas, my true love sent to me .....                    |  |
| 9. How many times does Santa check his Naughty & Nice list?                       |  |
| 10. In the song, I Saw Mommy Kissing Santa Claus, where were Mommy & Santa?       |  |

Answers on pg 13.



# Peguis students first to use Assiniboine’s “trades in a box” trailers

Submitted by ACC

Thirty students in Peguis First Nation are the first in the province to use one of three “trades in a box” trailers unveiled by Assiniboine Community College this past fall.

The students are studying to earn an Applied Building Construction certificate. The trailer, located in their community for the length of their program, has all the tools they need to learn by doing.

“This program is giving me more understanding of carpentry tools, materials and jobsite safety. I get the opportunity to work with and learn from others,” said student Megan Stevenson.

The 30 students are divided into two groups of 15 each. The first group entered the program directly in September and will graduate in March 2019.

The second group is taking high school courses now to prepare them to begin the carpentry courses in March 2019. Their high school courses are geared towards the certificate. For instance, their math course will emphasize the math skills they need to develop for carpentry. They will graduate in September 2019 with both the Applied Building Construction certificate and a Mature Student High School diploma.

Organizations that have partnered with Assiniboine to offer the program include Peguis First Nation, Peguis Development Corp. and the Post-Secondary Partnership Program of Indigenous Services Canada.

“Capacity building is a priority for Peguis First Nation. It is an essential component when developing new projects and opportunities. It is important to address skill shortages



Assiniboine Community College student Megan Stevenson is learning carpentry skills in the Applied Building Construction certificate program in Peguis First Nation.

and build upon skill development to improve the social well-being of our community members,” said Peguis First Nation Chief Glenn Hudson on behalf of the band council.

“Currently, Peguis First Nation has many economic developments underway and forthcoming, both locally and province-wide. The delivery of the Applied Building Construction Program for our community is a pro-active approach to build a high-demand, skilled workforce for the future. Many opportunities await the successful graduates for a bright future and potential advancement into the apprenticeship stream,” Chief Hudson said.

“We are witness to much greater success rates in community-based training. Our community strongly



EXPRESS PHOTOS SUBMITTED

Students in Peguis First Nation are learning carpentry skills in the Applied Building Construction certificate program delivered in their community by Assiniboine Community College.

supports all efforts to help community members move forward into careers and the workforce. A key to successful delivery of training is partnerships. We look forward to the continued work ahead on this important educational opportunity and the promotion of apprenticeship trades for our Indigenous community and region!” he said.

Graduating students will be qualified for employment in all aspects of carpentry involved in building construction.

The trailer is one of three unveiled by the college in September. The other two contain tools for the electrical and piping trades. They will be used in other locations in the coming months.

The programs contain a balance of theory and hands-on training and go through the Apprenticeship Manitoba accreditation process each time they are delivered for Level 1 in-school pre-employment training.

The trailers were made possible through \$150,000 in funding from Western Economic Diversification (WD), the federal government’s regional economic development agency. This funding covered 50 per cent of the total cost for the project. The remaining 50 per cent was paid for by the college.

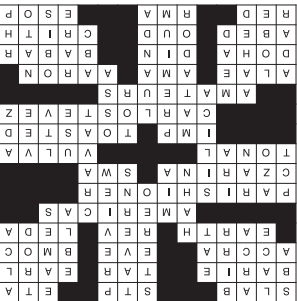
“The college’s Indigenization Strategy calls on us as a college to increase participation rates for First Nations, Métis and Inuit students, both on campus and by extending educational opportunities to regions that don’t have permanent post-secondary venues,” said Kris Desjarlais, Director of Indigenous Education at Assiniboine.

This past academic year, Assiniboine has offered programming in more than two dozen communities across Manitoba including Residential Framing in Sioux Valley Dakota Nation and Applied Building Construction in Waywayseecappo First Nation.

## take a break > GAMES

CLUES ACROSS

- 1. Thick piece of something
- 5. Engine additive
- 8. Anticipated arrival time
- 11. French commune
- 13. Cigarette (slang)
- 14. Nobleman
- 15. Ghana capital



Crossword Answer

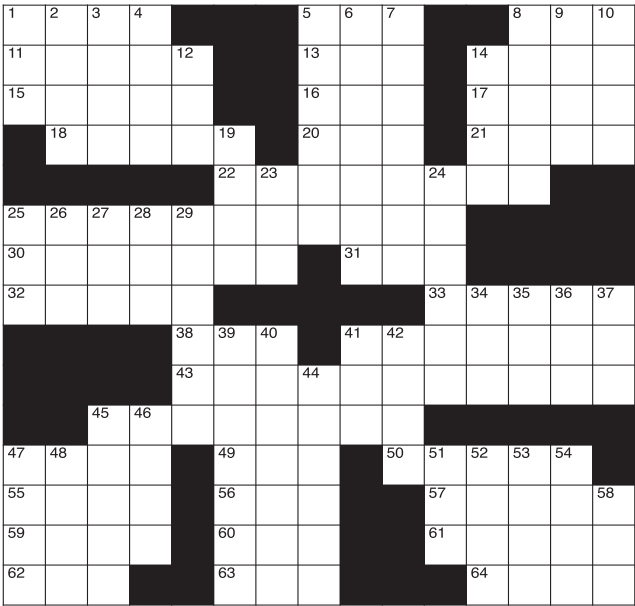
- 16. Adam’s wife
- 17. Most popular student
- 18. Where you currently are
- 20. Increase motor speed
- 21. Queen of Sparta
- 22. North, South and Central
- 25. Churchgoer
- 30. Russian empress
- 31. Female daredevils organization

- 32. Relating to music
- 33. Female body part
- 38. Tyrion Lannister
- 41. Honored
- 43. Argentine footballer
- 45. Novices
- 47. Wings
- 49. Doctors’ group
- 50. Packers’ QB
- 55. Qatar capital

- 56. Unpleasant noise
- 57. Lovable elephant
- 59. Sleeping
- 60. Lute
- 61. Weight of a liter of hydrogen
- 62. Crimson
- 63. Returned material authorization (abbr.)
- 64. Employee plan

- CLUES DOWN
- 1. Helps little firms
- 2. Type of curtain
- 3. Online stock exchange
- 4. Irish castle
- 5. Audio-system
- 6. Places to grab a drink
- 7. What’s coming
- 8. Designed chairs
- 9. Stepped on
- 10. Genus of birds
- 12. Consume
- 14. Ancient Syrian city
- 19. Australian brewery

- 23. Not present
- 24. Necktie
- 25. What part of (abbr.)
- 26. Type of compound
- 27. Jogged quickly
- 28. Roth is one type
- 29. Mineral
- 34. Purpose
- 35. Financial term (abbr.)
- 36. Orange is the New Black character
- 37. Used to cut and shape wood
- 39. Bullfighter
- 40. Top of the line
- 41. Hill
- 42. Greek mountain
- 44. Angola’s capital
- 45. Expressed pleasure
- 46. Fermented honey beverage
- 47. Month in the Jewish calendar
- 48. Frontal is one type



- 51. Basics
- 52. Uncommon
- 53. Broad kimono sashes

- 54. European defense organization
- 58. Box score term



# get inspired

> MEAL IDEAS



## Rosemary and Raspberry Balsamic Roasted Leg of Lamb

1/2 teaspoon salt  
1/4 teaspoon pepper

To make Roasted Leg of Lamb: Heat oven to 400 F. In bowl, whisk olive oil, raspberry balsamic glaze, rosemary and mustard; set aside.

Make small incisions in lamb and insert garlic slices. Rub olive oil mixture over lamb. Sprinkle with salt and pepper. Transfer to roasting pan fitted with rack. Add onions; pour water into bottom of pan.

Roast 80-90 minutes, or until internal temperature reaches 145 F for medium-rare, adding water to pan as needed to avoid scorching and onions drying out.

Transfer lamb to carving board and tent with foil.

To make Gravy: Place roasting pan on stovetop over medium-high heat; stir in flour. Whisk in wine; boil 1-2 minutes, or until reduced by half. Whisk in chicken stock and raspberry balsamic glaze. Add rosemary; bring to boil and simmer 8-10 minutes, or until thickened. Season with salt and pepper. Serve with lamb.

Prep time: 10 minutes  
Cook time: 1 hour, 30 minutes  
Servings: 8  
Roasted Leg of Lamb:  
3 tablespoons Filippo Berio Olive Oil  
2 tablespoons Filippo Berio Raspberry Balsamic Glaze  
1 tablespoon chopped fresh rosemary  
4 teaspoons grainy mustard  
1 bone-in leg of lamb (about 6 pounds)  
2 cloves garlic, thinly sliced  
1 teaspoon salt  
1 teaspoon pepper  
3 onions, quartered  
1 cup water  
Gravy:  
3 tablespoons all-purpose flour  
1/2 cup dry red wine  
4 cups chicken stock  
2 tablespoons Filippo Berio Raspberry Balsamic Glaze  
1 sprig fresh rosemary



## Potato, Turkey and Veggie Casserole

vegetables, drained  
nonstick cooking spray  
1/2 cup bread crumbs

Heat oven to 350 F. In large, nonstick skillet over medium heat, heat 1 tablespoon oil. Add turkey, thyme, garlic powder, pepper and salt, if desired. Cook 5-7 minutes, until cooked through, stirring occasionally and breaking turkey into large crumbles.

Stir in potato salad and sour cream. Add vegetables; stir to combine. Spray 2-quart casserole dish with nonstick cooking spray. Spoon in casserole mixture.

Toss together bread crumbs and remaining oil. Sprinkle over casserole. Bake 30 minutes, or until bubbly and heated through.

Substitution: Leftover chopped turkey (about 1 1/2 cups) can be cooked 2-3 minutes in skillet in place of ground turkey.

Prep time: 15 minutes  
Cook time: 30 minutes  
Servings: 6  
1 tablespoon, plus 1 teaspoon, olive oil  
3/4 pound extra-lean ground turkey breast  
1/2 teaspoon dried thyme leaves  
1/2 teaspoon garlic powder  
1/2 teaspoon ground black pepper  
1/2 teaspoon salt (optional)  
1 can (15 ounces) READ German Potato Salad  
1/2 cup light sour cream  
2 cups frozen, thawed or canned mixed



## Love is Breakable, Learn to Handle with Care

restored, and that cannot happen without openness and honesty.

Are the feelings of love deeper, or at least as deep, as the feelings of hurt and anger? If love is still there, hope is still there. Each partner has to picture the rest of his or her life both with and without the other. If spending the future with this person still feels good and right, then chances are, if the above criteria are met, it could happen. Often, professional help is needed, to help the couple move forward. Just because a couple stays together, does not mean the marriage has been rebuilt.

The good news is that despite the struggles, a marriage can be made strong again, perhaps even better than ever. The bad news is that once a significant other has been hurt through betrayal, he or she may never again feel the same about the partner. Love is 'breakable', and should be handled with care.

Gwen Randall-Young is an author and award-winning Psychotherapist. For permission to reprint this article, or to obtain books, cds or MP3's, visit [www.gwen.ca](http://www.gwen.ca). Follow Gwen on FaceBook for daily inspiration.

What was the level of communication between the couple? Were there unresolved issues that undermined the relationship? Problems in the marriage are never a justification for betrayal, but can help us to understand how things evolved as they did.

There needs to be an agreement about complete honesty through the healing process. There has to be disclosure. Intimacy needs to be



## Beet Carpaccio Salad with Toasted Hazelnuts

sic Balsamic Glaze

1/4 teaspoon flaked sea salt  
1/4 teaspoon cracked pepper

Heat oven to 400 F.

Using chef's knife or mandoline, thinly slice beets; arrange on platter.

Arrange microgreens over beets; scatter with goat cheese. Sprinkle hazelnuts over top and drizzle with balsamic glaze. Sprinkle with salt and pepper.

Prep time: 10 min  
Servings: 4

1 1/2 pounds roasted beets  
2 cups microgreens  
4 ounces goat cheese, crumbled  
1/4 cup chopped toasted hazelnuts  
2 tablespoons Filippo Berio Clas-

**Learn how to create a safe haven.**

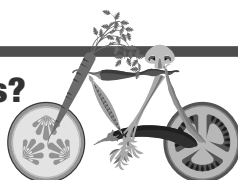
*We help you radically reduce chemicals in your home*

**Norwex®**

Ask me how  
**Stephanie 204-896-3980**  
Independent Sales Consultant  
[cleanwithwater15@gmail.com](mailto:cleanwithwater15@gmail.com)

**ISAGENIX®**  
Weightloss • Energy & Performance • Healthy Aging  
Allana Sawatzky  
[allana333@hotmail.com](mailto:allana333@hotmail.com)  
Janice Gulay  
[jkaraim@mymts.net](mailto:jkaraim@mymts.net) (c) 1-204-648-3836  
Rose Sawatzky  
[isa.rose1957@gmail.com](mailto:isa.rose1957@gmail.com) (c) 1-204-479-8227  
[www.isaproduct.com](http://www.isaproduct.com)

**Do you have a Health or Wellness Business?**  
Call Branden at  
**204-641-4104 to advertise**





# sports & recreation

INSIDE > OUTSIDE > UPSIDE DOWN

## Morden, Winkler to host National Women's Under-18 Championship

### Submitted

The very best young women's players from around the country will converge on Morden and Winkler, next November to compete for gold at the National Women's Under-18 Championship, marking the first time Manitoba will host the tournament.

"Hockey Canada is very excited to bring this event to Morden and Winkler next fall," said Scott Smith, president and COO of Hockey Canada. "Historically, fans have had the opportunity to watch as Canada's future superstars compete for their provinces before competing wearing the Maple Leaf at world championships and the Olympics."

Morden is no stranger to successfully hosting national hockey events, having hosted the 2017 Esso Cup, Canada's National Female Midget Championship, while Winkler will host a Hockey Canada tournament for the first time.

"We welcome the chance to work with Winkler on hosting the National Women's Under-18 Championship," said Morden Mayor Brandon Burley. "Although both communities are capable of hosting large-scale events on their own, we are stronger together. We are excited to have the opportunity to build on the success of the Esso Cup."

"Winkler has a history of hosting very successful events including Hockey Day in Canada, the Manitoba Games, the Manitoba Scotties Tournament of Hearts and the Viterra men's provincial curling championship," said Winkler Mayor Martin Harder. "Our community has always rallied around these events thanks to the strength of our volunteers. We look forward to hosting this and future events with our neighbours to the west."

"It's exciting to welcome Hockey Canada back to the region," said Clare Agnew, co-chair of the host organizing committee. "There was such positive energy in the community during the Esso Cup, it makes planning this one even more exciting. The confidence of Hockey Canada and our understanding of its expectations makes for a great partnership."

Historically, the event has netted more than \$1.5 million in economic impact for the host region, and as with all Hockey Canada events, net proceeds will remain locally to support the growth of the game.

"Hockey Manitoba is extremely confident that Morden and Winkler will present an exceptional atmosphere in order to guarantee a positive, successful and memorable event," said Bill Whitehead, president of Hockey

Manitoba. "Both communities have a deep history in the promotion and operation of events and are excited about the opportunity to stage the 2019 National Women's Under-18 Championship."

The National Women's Under-18 Championship is held every year (excluding years where the Canada Winter Games take place), and features teams representing provinces and

regions across the country. Ontario teams have won each of the 12 gold medals, while the host Manitobans will be looking to add a first national title to their two silver and three bronze medals.

For more information on Hockey Canada and the National Women's Under-18 Championship, please visit [HockeyCanada.ca](http://HockeyCanada.ca), or follow through social media on Facebook and Twitter.

## Sigurdson wins provincial men's curling berth



EXPRESS PHOTO SUBMITTED

Gimli's Steen Sigurdson rink won a regional berth to represent the Interlake at the Manitoba Men's provincial curling championship in Virden in February. Team members, left to right, Sigurdson, Andrew Hunt, Dillon Bednarek and Mitch Einarson.

### Staff

Steen Sigurdson of the Gimli Curling Club team will represent the Interlake at the Manitoba Men's provincial curling championship in Virden in February.

Sigurdson's foursome gained entry into the provincials by winning a regional qualifying tournament on the Dec. 15-16 weekend at the Gimli Rec Centre. It was a hard-earned victory as an extra end was required before Sigurdson's squad triumphed over the Justin Reynolds quartet also from the Gimli Curling Club.

The winning skip was supported by third Andrew Hunt, second Dillon Bednarek and lead Mitch Einarson. They were in a close battle with Reynolds whose team was composed on third Nolan Bradshaw, second Justin Hoplock and lead Derick Anderson.

Steen Sigurdson, incidentally, is a member of a Gimli family that has excelled in men's curling for four generations. Preceding him in many epic on-ice battles were his great grandfather Bjorn, his grandfather Ray and his father Barrie.

## Peguis loses wild one to Cross Lake

### Staff

There wasn't much defence played between the Peguis Juniors and Cross Lake Islanders on Sunday afternoon.

The two teams combined for 23 goals - and 114 shots - as Cross Lake skated to a wild 15-8 Keystone Junior Hockey League victory.

The Islanders snapped a 7-7 tie in the third period with eight goals in just a 9:51 span.

Tyrome Spence-Bair paced Peguis with three goals and three assists while Travis McPherson

and Ethan Daniels each had two goals and two assists.

Evan Gisler-Klyne scored the Juniors' other goal to go along with two assists.

On Saturday, Cross Lake edged Peguis 6-5 as the Islanders scored five second-period goals.

Keenan McPherson (two), Travis McPherson, Daniels, and Shaydon Mousseau scored for Peguis.

With the two losses, the Juniors have a 4-9-0-1 record and nine points to occupy third place in the four-team league.



# Lightning drop pair of Midget 'AAA' games

By Brian Bowman

The Interlake Lightning are a difficult team to figure out.

Just when you think the team is headed in the right direction, they have a stinker of a game.

That happened on Sunday afternoon when the Lightning lost 7-1 to the Central Plains Capitals in Portage la Prairie.

Central Plains led 4-0 after the first period and then 6-0 after two periods before the Interlake's Shane Bear scored an unassisted power-play goal at 8:15 of the third.

Kian Calder (two), Ryan Botterill, Alex Cattani, Riley Borody, Ryan Robinson, and Stephen Grahn scored for Central Plains.

On Friday, the Lightning gave the Brandon Wheat Kings a good battle before losing 4-3 in overtime in Teulon.

Troy Hamilton scored the game winner in OT.

Interlake's Matthew Vandel had tied the score at 3-3 at 15:06 of the third period.

Drayson Collyer gave Brandon a 1-0 lead with a first-period power-play goal.

Interlake's Ethan Johnson tied the score with a power-play goal of his own and then the Wheat Kings took a 3-1 lead on tallies from Hamilton and Pierce Martin.

The Lightning's Chase Barkley netted a shorthanded goal at 19:07 of the second period to make the score 3-2. Chris Fines made 44 saves in the loss.

Interlake, now 5-20-0-2-0, will host the Pembina Valley Hawks on Friday (8 p.m.) and then will close out its schedule before the holiday break with a road game Saturday (1:15 p.m.) against the Winnipeg Wild.



EXPRESS PHOTO BY LANA MEIER

The Lightning's Nick Prystupa looks to make a pass against the Brandon Wheat Kings last Friday.

## Fines named Midget AAA player of the week



Chris Fines

### Staff

The Manitoba AAA Midget Hockey League announced Dec. 11 that Interlake Lightning goaltender Chris Fines was selected as the CCM Hockey Player of the Week.

In two starts for the Lightning, Fines stopped 66 of 68 shots, earning a 1.01 goals-against average and .971 save percentage.

Against the Winnipeg Bruins, Fines turned aside 32 shots as the 12th-seeded Lightning fell to the eighth-seeded Bruins 3-0.

Fines followed that up the next day with a 34-save performance to earn his first shutout of the season. Fines was instrumental in the game, helping the Lightning upset the second-seeded Winnipeg Thrashers 1-0.

The 16 year old is in his first full season with the Lightning, posting a 3-12 record with a .898 save percentage.

As of last week, he has faced the fifth most shots and has made the third most saves in the league. The Stonewall native is a prospect of the Manitoba Junior Hockey League's Portage Terriers.

Honourable mention for the award went to Pembina Valley's Campbell Ens, Eastman's Matthew Boonstra and the Winnipeg Thrashers' Kale Price.

# Local teams suffer CRJHL losses

By Brian Bowman

It was a tough weekend for the two local Capital Region Junior Hockey League teams last weekend.

The Lundar Falcons lost a pair of games while the Arborg Ice Dawgs suffered a lopsided loss to the first-place Selkirk Fishermen.

Lundar began the weekend with a 5-3 road loss to the St. Malo Warriors on Saturday.

The Falcons were flying to start the second period, scoring shorthanded goals by Romano Paul, Josh Wilkinson and Xavier Hatterman by the 9:50 mark of the frame.

Evan Wuerch and Maxime Collette replied for St. Malo in the second period and then Tyrel Bueckert, Collette and Alex Murray tallied in the third.

Murray's goal came with just a second left in the game and Lundar goaltender Chris Lesage pulled for an extra attacker.

The Falcons also blew a pair of big leads in a 6-5 overtime loss to the Selkirk Fishermen on Sunday evening.

Chad King scored the game winner in OT as the Fishermen battled back from a 4-0 first-period deficit to score five goals in the third.

Selkirk also trailed 5-1 midway

in the third before mounting the comeback.

Juliana Garcea and Dawson Courchene each scored once and added an assist for Selkirk.

Ben Kelly, Travis Spratt and Kyle Melo also scored for the Fishermen.

Eric Miller led Lundar with two goals and an assist while Jesse McDonald added a goal and an assist.

Jayden Allary and Josh Wilkinson also scored for the Falcons.

Austin DeBoer made 29 saves for the victory.

Selkirk also defeated Arborg 8-1 on Saturday as Juliano Garcea had a strong game with two goals and two assists.

Dane Derewianchuk added two goals and an assist while Reece Tessier, Evan Bedard, Nico Morrow-Litke, and Travis Spratt also scored for Selkirk.

Colton Davies netted Arborg's lone goal just 50 seconds into the game.

Riley Bannerman stopped 35 Ice Dawgs' shots for the victory.

Selkirk now has 35 points to lead the five-team CRJHL heading into this week's action. St. Malo is second with 28 points, followed by Lundar (23), Arborg (21) and North Winnipeg (14).

Arborg played at North Winnipeg on Tuesday but no score was available at press time. The Ice Dawgs will host the Fishermen Saturday (7:30 p.m.) and then will battle the Falcons in Lundar on Sunday (8 p.m.).

# Basketball champions

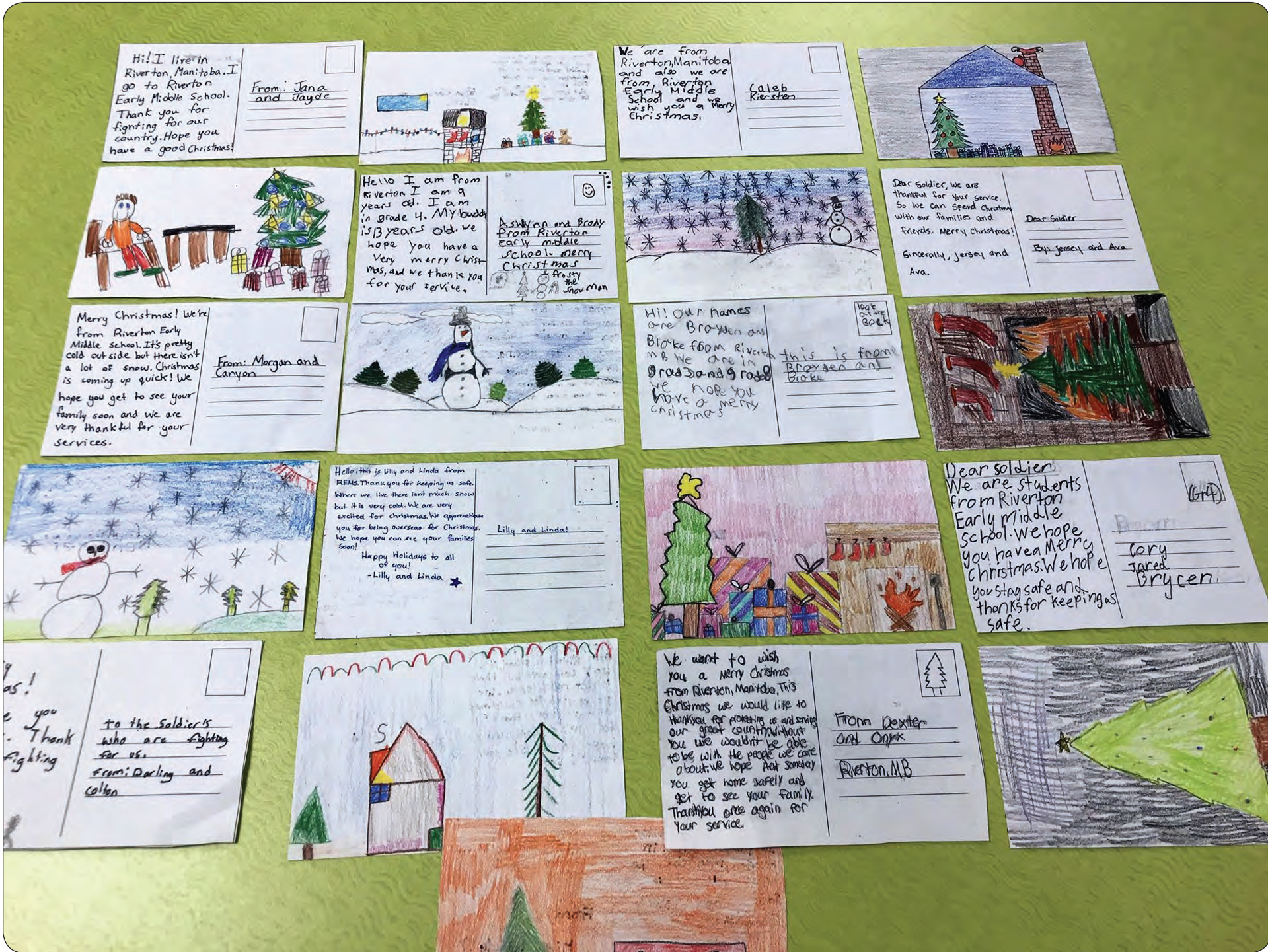


EXPRESS PHOTO SUBMITTED

The Arborg Collegiate varsity boys' basketball team won their home tournament this past weekend.



# Christmas cards for the Armed Forces troops



Evergreen School Division Grade 3/4 and 7/8 students wrote Christmas cards and sent them to Canadian Armed Forces troops overseas.

**To All Our Members and Friends during the Holidays**

Christmas is our favorite time of year because it gives us the opportunity to express our gratitude for the fortune of serving people like you



Bulk Petroleum Hwy 68 & Main St.	Arborg Food Store 253 Main Street	Arborg Gas Bar 316 Main Street	Eriksdale Food Store 24 Railway Avenue	Eriksdale Hardware 21 Railway Avenue
-------------------------------------	--------------------------------------	-----------------------------------	---	---



As the Holiday season is upon us, we take joy in extending a sincere "THANK YOU" to those who have helped to shape our business in a most significant way. We value our relationship with you and look forward to working with you in the year to come. We wish you a safe and Happy Holiday season along with a New Year filled with peace and prosperity.

**Season's Greetings**  
From Dwayne Smith & Staff at the Eriksdale and Fisher Branch offices.

**Holiday Hours.**  
Closed: Dec. 24, Dec. 25, Dec. 26 & Jan. 1  
\*\*Regular operating hours on all other days.\*\*  
Fisher Branch, Mon-Fri 9am-6pm  
Eriksdale, Mon-Fri 9am-5pm  
[www.freedomwestinsurance.com](http://www.freedomwestinsurance.com)







# Season's Readings!

As we turn the page to another holiday season, we'd like to take a moment to thank you, our loyal readers, for your trust and support. We hope this Christmas delivers all the good news you've been hoping for and more. Happy Holidays!

## Staff:

Allana Sawatzky  
Arnie Weidl  
Ashleigh Viveiros  
Branden Meier  
Brett Mitchell  
Brian Bowman  
Cal Franchuk  
Christy Brown  
Corrie Sargent  
Dan Anderson  
Debbie Strauss  
Georgia Campbell

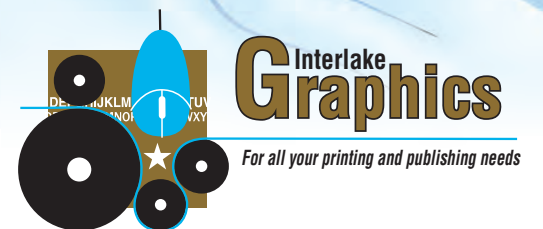
Gwen Keller  
Harry Siemens  
Jennifer McFee  
Jo-Anne Procter  
Justin Luschinski  
Lana Meier  
Ligia Braidotti  
Lindsey Enns  
Lorne Stelmach  
Lucy Kowalchuk  
Michelle Balharry  
Nicole Kapusta  
Patricia Barrett

Peter Cantelon  
Rick Hiebert  
Rick Reimer  
Sam Reimer  
Stephanie Duncan  
Tara Gionet  
Tracy Farmer

## Contract Workers:

Bob Cameron  
Cameron Frank  
Colleen Hyslop  
Crystal Wood

Garry Peltz  
Glenda Lajoie  
Janice Carriere  
Joan Kalupar  
Kathy Aconley  
Klaus Mueller  
Lynda Nesbitt  
Marie Hrabarchuk  
Rita Mueller  
Sandra Jackman  
Wayde Carriere



Ph. 785-1618 Selkirk



Ph. 467-5836 Stonewall



Ph. 325-6888 Winkler



Ph. 467-5836 Stonewall



# Classifieds

THE **EXPRESS**  
WEEKLY NEWS

Book Your Classified Ad Today - Call 467-5836 or Email [classifieds@expressweeklynews.ca](mailto:classifieds@expressweeklynews.ca)



\$59,900

**COLD WEATHER,  
HOT BUY  
GREAT INVESTMENT  
OPPORTUNITY!**  
**Scrooge approved \$59,900**

*Selling the Interlake  
one Yard at a time*



**L.J. BARON**  
EST. 1953  
*Realty*



Call Matt McSherry  
1-204-886-7585  
to book your own  
personal viewing!

**Matt McSherry 204-886-7585/  
www.ljbaron.com 888-629-6700**



RURAL MUNICIPALITY OF GIMLI

## DIESEL-HEAVY EQUIPMENT JOURNEYMAN MECHANIC

The Rural Municipality of Gimli is accepting applications for the position of Journeyman Mechanic. This position is under the direct supervision of the Manager of Public Works and is responsible for performing various tasks necessary for the repair, maintenance and operation of all municipal equipment. The successful candidate will be required to complete the following duties included, but not limited to:

- Make recommendations regarding the extent of repairs and suggest methods of improvement.
- Repair the equipment in a timely and financially responsible manner.
- Think logically and keep up with changes in technology.
- Interpret work orders and technical manuals.
- Have a strong awareness and attitude towards workplace health and safety.
- Be motivated and able to work in a challenging environment with minimal supervision.
- Providing and maintaining a set of tools required to perform required functions;
- Performing other tasks related to his/her classification.
- Keep maintenance reports, inventory and documentation up to date.
- Keep a tidy work place free of any hazards.

Applicants are required to have a Journeyman Mechanic Certification, interprovincial Red Seal is preferred, min 5 years' experience and have a complete set of mechanical tools for use during employment. Experience operating heavy equipment and trucks is also required. Welding experience will also be an asset.

The incumbent will be required to hold a valid class one with air endorsement Manitoba driver's license. The incumbent will be required to work 40 hours per week and to be available for any call out emergencies that may arise from time to time.

Salary range: as per current Union Agreement and dependent upon skills and qualifications.

Resumes complete with a minimum of three references and a copy of related education transcripts will be received at the Municipal Office, 62 2nd Ave, until noon on December 28, 2018.

Darcy Hjelmeland  
Manager of Public Works & Utility Operations  
Rural Municipality of Gimli  
PO Box 1246  
Gimli, MB. R0C 1B0  
Email: [gimli@rmgimli.com](mailto:gimli@rmgimli.com)

*We thank all candidates for their interest, however, only those individuals considered for an interview will be contacted.*

**Book Your Classified Ad Today - Call 467-5836**

### SCRAP METAL

Buying scrap metal, cars, tractors, combines, farm scrap, any metal material, any farm machinery. Ph Lonnie at 204-886-3407 lve. message or cell at 204-861-2031.

### FOR RENT

Monthly room rental Viking Inn, 2 double bed, microwave, mini fridge, cable TV, free Wifi & parking. \$700 (plus damage deposit). Call 204-642-5168.

### PROPERTY FOR SALE

10 acres in Arborg, MB. Suitable for residential subdivision. Ph 204-494-0517.

### FIREWOOD

1 & 2 year seasoned firewood, cut & split, delivery available. Ph 204-861-2330 or 204-886-3416.

### HELP WANTED

Medical Transcription! In-demand career! Employers have work-at-home positions available. Get online training you need from an employer-trusted program. Visit: [CareerStep.ca/MT](http://CareerStep.ca/MT) or 1-855-768-3362 to start training for your work-at-home career today!

### MISCELLANEOUS

Need results? Get seen by 415,000 readers each week! The province wide classifieds blanket Manitoba with your ad/information. Book your business, event, promote your organization, sell something, thank someone, hire employees. We can help you with that. Call 204-467-5836, or contact MCNA at 204-947 - 1691 or email [classified@mcna.com](mailto:classified@mcna.com) for more details. [www.mcna.com](http://www.mcna.com)

## NEWS TIPS

Call 467-5836

### ANNOUNCEMENT

#### BIRTHDAY



Happy 29th Birthday  
on Christmas Day  
to our fabulous Dad/Afi  
Mike Guttormson!

### MISCELLANEOUS

Batteries for everything. Automotive, farm, construction, ATV, marine, motorcycle, golf carts, phones, tools, radios, computers etc. Reconditioned, obsolete and hard-to-find batteries. Solar equipment. The Battery Man. Winnipeg. 1-877-775-8271 [www.batteryman.ca](http://www.batteryman.ca)

### MISCELLANEOUS

Sales - Financing - Leasing of trucks, truckbeds, trailers, full repair, safeties & Autopac trailer repair. Kaldeck Truck & Trailer Inc., Hwy #1 MacGregor, MB. 1-888-685-3127 [www.kaldecktrailers.com](http://www.kaldecktrailers.com)



Tender for

## Gimli Harbour Finger Float Replacements

Send requests for bid package to supply and install 19 finger floats 1.29m X 6.706m (4' X 22') to [gimlihm2@gmail.com](mailto:gimlihm2@gmail.com) by January 13th, 2019.

Sealed bids accepted until January 31st 2019 by registered mail, lowest bid not necessarily accepted.

## REPORTER/ PHOTOGRAPHER

*The Stonewall Teulon Tribune* and *Express Weekly News* are looking for an outgoing individual to join our news team as a reporter/photographer covering Stonewall, Teulon, St. Laurent, Rockwood, Rosser, Warren, Woodlands, Armstrong and the communities along Highway 6, including Lundar, Eriksdale, Ashern, Grahamdale, Steep Rock, Moosehorn and across to Fisher Branch.

The ideal candidate is someone who is familiar with the goings-on of the region (or willing to get out there and learn), eager to take the initiative in finding compelling stories, has the know-how to take awesome photographs and is able to write clean, engaging copy on deadline.

This is a full-time position. Prior journalism experience is a definite asset. Must be fluent in Adobe Indesign, Photoshop and photo colour correcting. Must have reliable transportation and be willing to work flexible hours, including covering evening and weekend news events.

Submit your detailed resume  
and samples of writing on or  
before Nov. 9, 2018 to Lana Meier at  
[news@expressweeklynews.ca](mailto:news@expressweeklynews.ca)

Stonewall Teulon  
**Tribune**

THE **EXPRESS**  
WEEKLY NEWS

*We thank all applicants for their interest,  
however, only candidates selected for  
interviews will be contacted.*



# Classifieds Announcements

THE EXPRESS  
WEEKLY NEWS

## WANTED

Wanted - older stringed musical instruments & amps, etc. Call 204-494-0517.

Looking for a pair of XXXXL snowmobile pants and XXXXL helmet. Ph. 204-485-0010.

## HEALTH

Medical condition? Receive up to \$50,000 from the Canadian government? For your free no obligation information package call Manitoba Benefits 1-800-211-3550 or send a text message with your name and mailing address to 204-808-0035 for your free benefits package.

**PENNER OIL**  
FUELED BY INTEGRITY

**Winter Road Haul 2019**  
Class 1 Drivers needed for deliveries in MB & NW Ont.  
(800) 665-4302 ext. 251  
or e-mail: orderdesk@penneroil.ca

## HEALTH

Are you suffering from joint or arthritic pain? If so, you owe it to yourself to try elk velvet antler capsules. Hundreds have found relief. Benefits humans and pets. EVA is composed of proteins, amino acids, minerals, lipids and water. Key compounds that work to stimulate red blood cell production & cartilage cell regeneration & development. Stonewood Elk Ranch Ltd., 204-467-8884 or e-mail stonewood elkbranch@mymts.net

**LOYALTY**  
Heavy Duty Mechanic / Foreman Needed

- Full time, wages, benefits & pension package
- Service & Repair equipment, etc.
- Semi-truck and liquid bulk tankers / trailers
- Read, Write & Complete work orders
- Must Comply with Safety Policies
- Strong skill set required
- Multitasking & working well with team a must

P: 204-571-3230

## NOTICE TO CREDITORS

IN THE MATTER OF THE ESTATE OF SANDRA LEE PAYJACK, late of Eriksdale, in the Province of Manitoba, deceased.  
ALL claims against the above estate, duly verified by Statutory Declaration, must be filed with the undersigned at their offices at 407 Main St., Selkirk, MB, R1A 1T9, on or before the 19th day of January 2019.  
DATED at the City of Selkirk, in Manitoba, this 14th day of December 2018.  
PULLAN KAMMERLOCH FROHLINGER  
Selkirk Office-David Moore

**BOOK YOUR ANNOUNCEMENT TODAY**  
Call 467-5836

## Hip or Knee Replacement?

Restrictions in daily activities?  
**\$2,500** Tax Credit  
**\$40,000** refund cheque/ rebates  
Disability Tax Credit.  
**204-453-5372**

## NEWS TIPS

Call 467-5836

**FEHR'S CABINET**  
SHOWROOM/WAREHOUSE

**Manitoba made!**  
Top quality kitchen cabinets

- Custom, Stock & Surplus
- Free 3D design
- Prompt service
- Professional installation available

Serving Manitoba province-wide for 25 years!  
office@fehrcabinets.com  
1-800-758-6924

## OBITUARY



Mary Ann Zubriski  
(nee Turcan)

June 13, 1955 - December 08, 2018

It is with great sadness that the family of Mary Ann Zubriski announces the sudden passing of our beloved Wife, Baba, Sister, Aunt and dear friend after a short battle with cancer. She passed away on the evening of December 08, 2018 surrounded by her family and close friends at the Arborg & District Health Centre at the age of 63.

Mary Ann was predeceased by her father Frank Turcan, mother Helen Turcan, uncle Nick Leskiw, aunt Jean Leskiw, father-in-law Joseph Zubriski and mother-in-law Olga Zubriski, brother-in-law Steve Chudyk and brother-in-law Larry Zubriski and many other loved ones. She is survived by her loving husband Eugene Zubriski; sons Tyler (Brittany), Brendan (Annie); grandchildren Peyton, Ashton (Tyler and Brittany), Zoey, Ben and Baby Zubriski (Brendan and Annie) and a long list of family and dear friends.

Mary Ann AKA Mom, Baba, Marion, Nellie and Marushka was born in Gimli, Manitoba and raised on a farm in Malonton with her brothers and sister. In 1974 she met the love of her life Eugene and they settled in a home in Bjarmi an area just north of Arborg and raised their two sons. There summers consisted of slo-pitch games and tournaments and camping with the Gator family. Winters were full of snowmobiling fun and warm up shacks. Nothing brought her greater joy than spending time with her grandkids at the lake, making perogies, and sharing her love of nature with them. She loved them so much and she was so excited to meet her fifth grandchild in February.

In 2014 Mary Ann and Eugene purchased a camping spot at Spruce Sands and this spot was quickly named Baba's Happy Place as she loved spending her summers at the lake going for bike rides, golf cart adventures, relaxing with friends and camping with the grandkids.

Mary Ann will be dearly missed, loved by many and always remembered by her warm smile and kind heart.

We would like to thank Dr. Donnelly and the wonderful nurses and staff at the Arborg & District Health Centre for the excellent care they gave Mary Ann.

A private memorial service will be held at a later date.

In lieu of flowers we ask you do an act of kindness and pay it forward.

VECHNAYA PAMYAT  
MacKenzie Funeral Home  
Arborg  
1-800-467-0024  
info@mackenziefh.com



## TO ADVERTISE

Call 204-641-4104 ads@expressweeklynews.ca

## Biz Cards

**COUPON**  
**FREE** COFFEE, TEA OR FOUNTAIN POP  
With the purchase of a breakfast, lunch or dinner entree  
**Barney Gargles** 185 Main St., Selkirk  
Phone 785-8663  
Expires Dec. 31, 2018

**CONVENIENCE**  
Grocery • Drinks • Snacks  
• Coffee to Go • Ice • Firewood  
• Fireworks • ATM • Greeting Cards  
• Newspapers • Books • Pet Food  
• Toys & more  
**SNAXS** 20088 First Ave,  
FIRST AVENUE Sandy Hook  
OPEN YEAR ROUND 10AM - 6PM  
7 DAYS A WEEK

**INTERLAKE INSULATORS**  
BALMORAL, MANITOBA  
• Spray Foam  
• Blow In  
**FREE ESTIMATES**  
Brent Meyers  
204-461-4669  
interlake\_insulators@hotmail.com  
**SPRAY FOAM SPECIALISTS**



**GIMLI VETERINARY SERVICES**  
70 Centre Street Gimli, MB R0C 1B0  
204-642-8398 lmtvet@mts.net

**Quarry PETS**  
Supplies & More  
Supplying All Your Pet's Needs  
**On-Site GROOMER**  
Call us for details  
317 Main St., Stonewall (204) 467-5924

**pampered chef**  
INDEPENDENT CONSULTANT  
• Cooking Shows • Meal Prep Solutions  
• Fundraisers • Individual Orders  
204-485-4272 call or text  
stoneware444@gmail.com  
www.pamperedchef.biz/michellebalharry

**Rx PharmaChoice**  
You have QUESTIONS, We have ANSWERS!  
• Prescriptions • Liquor Store  
• Home Health Care Aids  
• Snacks and more!  
**Advice for Life**  
**LUNDAR PHARMACY** 204-762-5431  
18 Main St., Lundar

**Glass Specialists**  
• Sealed Units  
• Flat Glass  
• Mirrors  
• Laminated  
• Tempered  
• Plexi/Lexan  
**Construction**  
• Windows & Doors  
• Siding  
• Custom Cladding  
• Decks  
• Construction/Renovations  
**Interlake Glass** 365 Main St. Arborg, Mb  
204.376.5177  
intglass@mymts.net

**WE DO IT ALL!**  
• Window Coverings by HunterDouglas  
• Floor Coverings • Countertops  
• Cabinetry by KitchenCraft & More!  
Mon-Fri 9am-5pm Closed Saturdays  
Hwy #9 & Colville Dr., Gimli  
(204) 642-8585  
www.thehomestoregimli.com

**WARREN LAHAIE**  
PARTS & SERVICE  
WARREN@GIMLIFORD.COM  
16-7TH AVE., GIMLI, MB  
204-642-5137  
**GIMLI Ford** EST. 1977

Everything you need to promote your business  
FLYERS  
BROCHURES  
POST CARDS  
STICKERS  
BUSINESS CARDS  
PRESENTATION FOLDERS  
SIGNS  
SOCIAL TICKETS  
DOOR HANGERS  
LETTERHEAD  
ENVELOPES  
INVOICES  
ESTIMATE SHEETS  
POSTERS  
MEMO PADS  
And MORE...  
**Interlake Graphics**  
For all your printing and publishing needs  
467-5836

**Interlake Cladding Solutions**  
**I.C.S**  
SPECIALIZE IN:  
• Metal Roofing & Siding • All types of Siding  
• Soffit, fascia, gutters and downspouts  
Serving the Interlake  
Theo Spray  
(204) 280-0071  
bearspray@hotmail.ca





**LOOK  
HERE**

**OPEN BOXING DAY**

**NOON TO 4:00 P.M.**

**SAVE! SAVE! SAVE!**

**MATTRESS & BOXSPRING SETS:**

**\*25% OFF** Floor Models

**\*20% OFF** In-stock units

**\*10% OFF** ordered units

**BONUS**

½ Price Bedding Accessories  
with the purchase of a bed!

- \* bedframe
- \* pillows
- \* sheets
- \* comforters
- \* mattress pad

**Cabinet  
Bed**

Now Only

**\$1,499**

Reg \$1999 Limited stock

Podium "Marion"  
Sofa & Loveseat  
Reg. \$1978

**NOW  
\$1,499**

Selected  
Lamps Set of 2

**NOW  
\$99**

Ashley Chaise  
Grey or black – stock only  
Reg \$509

**NOW  
\$299**

Podium Moncton Sofa and Loveseat  
100% Leather BUY the Sofa  
GET the Loveseat **FREE**  
Sofa \$2299 Loveseat Reg \$2,199 1 only cash & carry

Ashley Fabric  
Recliner  
7 colors to choose from

**NOW  
\$389**

A America Solid  
Mahogany  
Blanket Trunk  
Reg \$579

**NOW  
\$299**

**All  
Accessories  
1/3 OFF**

**7 pce Ashley Dining  
Set, Table & 6 chairs**

1 only

**Now \$999**  
Reg \$1485

**BIG**

**PRICE  
CUTS!**

**MORE  
SPECIALS**

**20% OFF  
ALL FLOOR DISPLAY  
FURNITURE**

**3 Months  
No Interest  
No Payments  
on Entire Store  
- Door  
Crashers  
Included**

**Yellow Tags are  
DOOR CRASHERS  
No Further Discounts**

**Many,  
many more  
PRICE CUTS  
will be made  
on Xmas  
Eve.**

**APPLIANCE SUPER SPECIAL**

**Whirlpool Top Load  
washer**

Now Only **\$599** Stock Only

**Frigidaire Induction  
30" Cooktop**

1 only **\$999** Reg. \$1,499

Minimum Discounts of **10%** any furniture & in-stock  
Appliances only (from reg. price)

**Smitty's**

**FURNITURE & APPLIANCES**

"The largest selection of Furniture  
& Appliances between the lakes"

**321 MAIN ST. - ARBORG**

**204-376-5242**

**TOLL FREE: 1-800-361-4156**

E-mail: [smittysfurniture@mts.net](mailto:smittysfurniture@mts.net) • [www.smittysfurniture.net](http://www.smittysfurniture.net)



**HOURS**

Monday	Dec 24	CLOSED
Tuesday	Dec 25	CLOSED
Wednesday	Dec 26	12-4
Thurs-Sat	Dec 27	
	-Dec 29	9-6